

NEUROSCIENCE

A fast link between face perception and memory in the temporal pole

Sofia M. Landi^{1,2*}, Pooja Viswanathan^{1,3}, Stephen Serene¹, Winrich A. Freiwald^{1,4*}

The question of how the brain recognizes the faces of familiar individuals has been important throughout the history of neuroscience. Cells linking visual processing to person memory have been proposed but not found. Here, we report the discovery of such cells through recordings from an area in the macaque temporal pole identified with functional magnetic resonance imaging. These cells responded to faces that were personally familiar. They responded nonlinearly to stepwise changes in face visibility and detail and holistically to face parts, reflecting key signatures of familiar face recognition. They discriminated between familiar identities, as fast as a general face identity area. The discovery of these cells establishes a new pathway for the fast recognition of familiar individuals.

Recognizing someone we know requires the combination of sensory perception and long-term memory. Where the brain stores these memories, and how it links sensory activity patterns to them, remains largely unknown. Consider the case of person recognition: The same person's face can evoke vastly different retinal activity patterns, yet all activate the same person's memory. We know how information from the eyes is transformed to extract facial identity across varying viewing conditions in the face-processing network (1), but not where and how this representation then activates person memory.

Theories for the neural basis of person recognition have a long history in neuroscience dating back to the idea of the “grandmother neuron” in the 1960s, which would respond to any image of one's grandmother and support the recollection of grandmother-related memories (2). A later theory posited a hybrid “face recognition unit” (3), which would combine properties of sensory face cells in encoding facial information with properties of memory cells in storing information from past personal encounters. Yet neither class of neuron has been found.

Face cells and an entire network of face areas have been discovered in the superior temporal

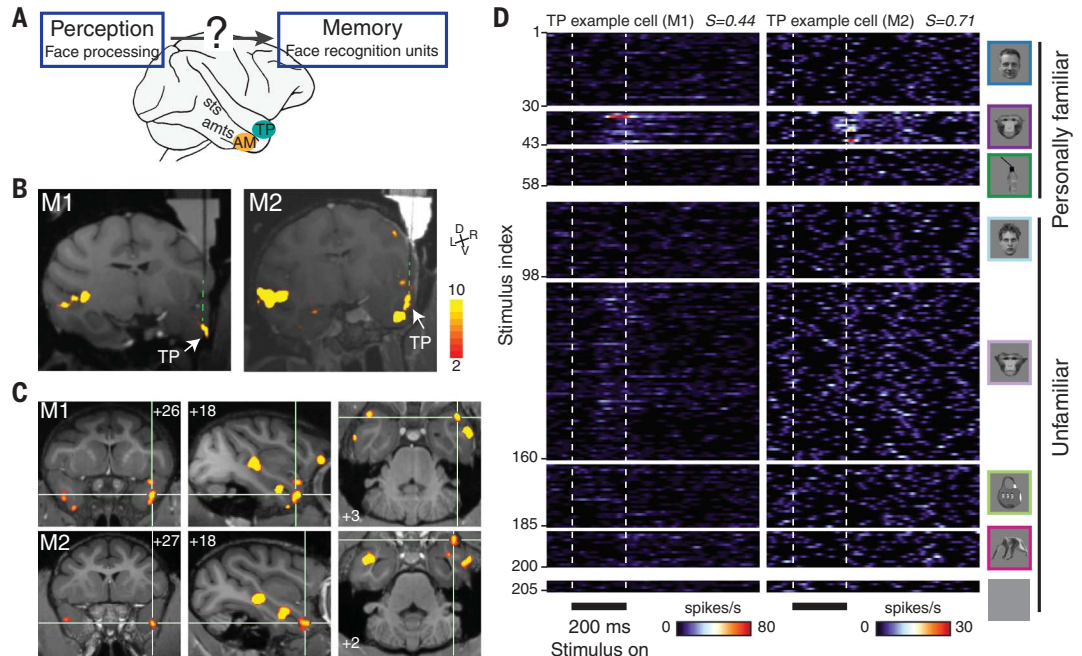
sulcus (STS) and inferotemporal (IT) cortex (1, 4, 5), and person memory cells have been discovered in the medial temporal lobe (6). However, in the temporal pole, only a few electrophysiological recordings have been performed (7). With neuropsychological evidence pointing toward a role of this region in person recognition (8), and the recent discovery of a small subregion (temporal pole face area TP) selective for familiar faces (9), we decided to record from the temporal pole. Because face identity memories might be consolidated exactly where they are processed (10), we also recorded from the most identity-selective face area in the IT, the anterior-medial face area (face area AM) (1, 11) (Fig. 1A).

Using whole-brain functional magnetic resonance imaging (fMRI), we localized areas TP and AM in the right hemispheres of two rhesus monkeys (Fig. 1, B and C, and fig. S1A; see methods). We recorded responses from all cells encountered. We assessed visual responsiveness, visual selectivity, and familiarity selectivity with a 205-image set that included human faces (30 personally familiar, 30 unfamiliar), monkey faces (12 personally familiar,

¹Laboratory of Neural Systems, The Rockefeller University, New York, NY, USA. ²Department of Physiology and Biophysics, University of Washington, Seattle, WA, USA. ³The Nash Family Department of Neuroscience and Friedman Brain Institute, Icahn School of Medicine at Mount Sinai, New York, NY, USA. ⁴The Center for Brains, Minds & Machines, Cambridge, MA, USA.
*Corresponding author. Email: slandi@uw.edu (S.M.L.); wfreiwald@rockefeller.edu (W.A.F.)

Fig. 1. Cells in the temporal pole area TP respond to familiar faces.

(A) Schematic: Face perception systems are thought to feed into downstream face memory systems (3) in ways yet unknown. Candidate areas in the macaque brain are area AM and area TP. (B) Structural MRI (T1-weighted image) and functional overlay (faces > objects), color coded for negative common logarithm of p value ($p < 0.001$, uncorrected) showing electrodes targeting recording TP in monkeys M1 and M2 (see methods). D, dorsal; L, left; R, right; V, ventral. (C) Coronal (left), parasagittal (middle), and axial (right) slices showing TP in M1 and M2. Numbers indicate stereotaxic coordinates: millimeters rostral to interaural line, millimeters from midline to the right, and millimeters dorsal from interaural line, respectively. (D) Mean



peristimulus time histograms of two TP example cells (left M1, right M2) across the 205-stimuli set (FOF) in eight categories (top to bottom, far right) presented for 200 ms (bottom) with 500-ms interstimulus intervals in spikes per second (color scale bottom). Each cell responds significantly to a range of familiar monkey faces. Sparseness indexes (S) (see methods) are shown in the top right of each plot.

Fig. 2. TP is selective for familiar monkey faces but not other familiar stimuli. (A)

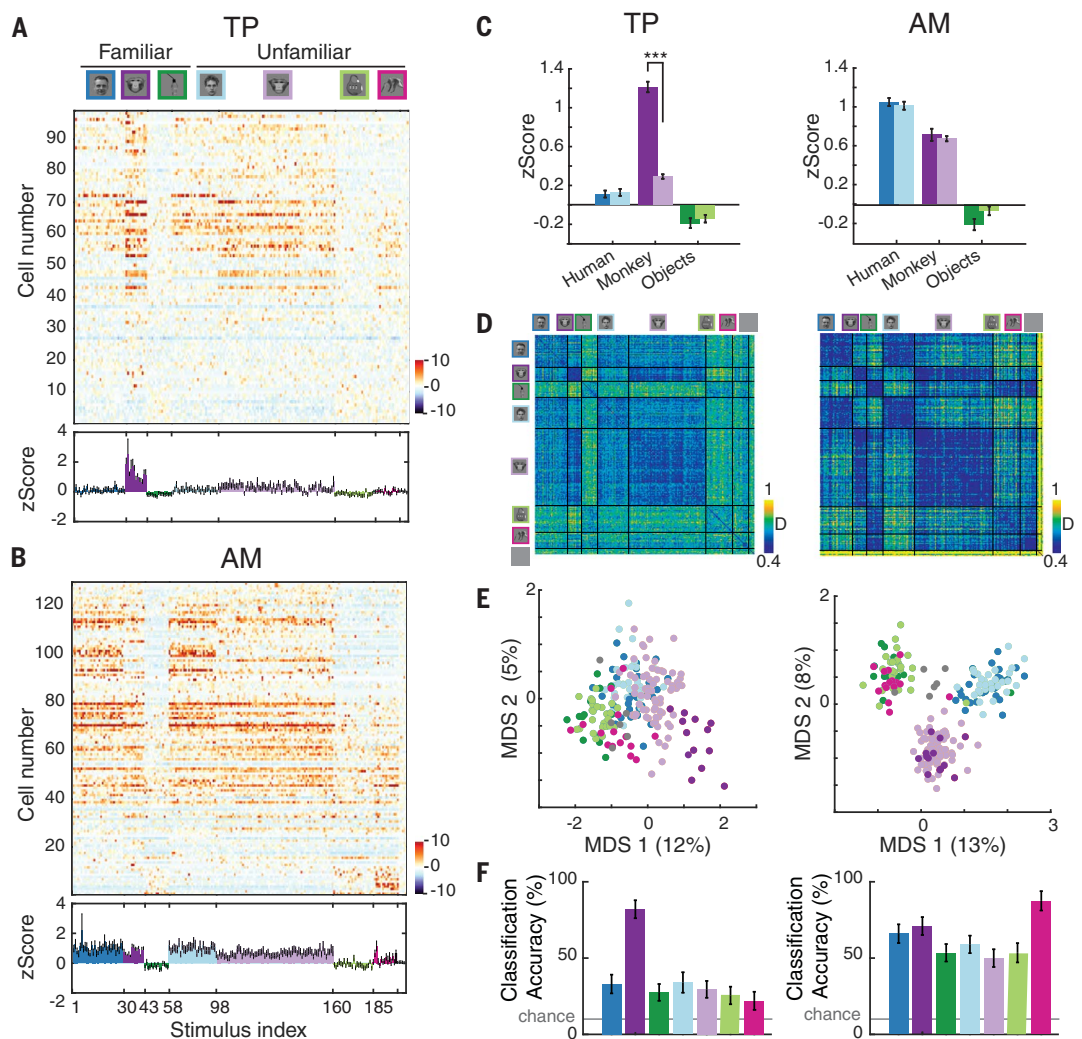
Population response matrices (z-scored, color scale lower right) to FOF stimulus set (top) for all recorded TP cells ($n = 98$, sorted top to bottom by face selectivity index; see methods). The average population response (mean z score \pm SEM) is shown at the bottom.

(B) Same as (A) for AM ($n = 130$).

(C) TP (left) and AM (right) population response (average z scores, error bars indicate 95% confidence intervals) for six categories [color scales as in (A)].

Significant post hoc tests ($***p < 10^{-4}$, corrected using Tukey's HSD) are shown for familiar versus unfamiliar stimuli.

(D) TP (left) and AM (right) population response dissimilarity matrix showing the dissimilarity (D) between all pairs of FOF stimuli quantified as $1 - \text{Pearson correlation coefficient}$; color scale is shown at the lower right. (E) Individual stimuli in two-dimensional space derived from the multidimensional scaling (MDS) of dissimilarity. The explained variance is shown for each dimension in the axis labels. (F) TP (left) and AM (right) population category decoding performance measured by linear classifier performance (see methods).



1 subject's own face, 72 unfamiliar), bodies (15 unfamiliar), objects (15 personally familiar, 25 unfamiliar), and gray background (5 images) (face object familiarity, FOF image set).

An example cell from area TP (Fig. 1D, left) remained visually unresponsive to any of the 145 face stimuli, with one exception—the face of a personally familiar monkey (stimulus 33). Another example cell (Fig. 1D, right) was unresponsive to nonface stimuli and responded selectively to the faces of several familiar monkeys. This pattern of high visual responsiveness, preference for monkey faces, and selectivity for familiar faces was typical for the TP population as a whole (Fig. 2A and fig. S2): Ninety out of 98 (92%) neurons responded significantly to at least one image (see methods), and the TP population preferred monkey over human faces and familiar over unfamiliar monkey faces [Fig. 2, A and C, left; significant two-way analysis of variance (ANOVA) stimulus category \times familiarity: $F_{2,18124} = 89.61$, $p < 10^{-39}$; post hoc Tukey's honestly significantly different (HSD) test: $p < 10^{-4}$]. Selectivity for

face familiarity was so high that the TP population responded more than three times as much to familiar than to unfamiliar monkey faces. AM cells, though also visually responsive (125 of 130, 96%), responded similarly to both monkey and human faces and familiar and unfamiliar faces [Fig. 2, B and C, and figs. S1B and S2; interaction effects $F_{2,24044} = 2.22$, $p > 0.1$; familiarity effect $F_{1,24044} = 0.3$, $p > 0.1$; stimulus category $F_{2,24044} = 317.99$, $p < 10^{-100}$]. The effect of familiarity on neuronal responses differed between TP and AM and between stimulus categories [three-way ANOVA interaction effect area \times familiarity \times category, $F_{2,42168} = 31.29$, $p < 0.001$]. Whereas in AM there were no significant familiarity effects for any category ($p > 0.1$), in TP, familiar monkey faces elicited a significantly higher response than all other categories (post hoc tests, $p < 10^{-4}$ corrected using Tukey's HSD).

The pattern of the TP population response was also specialized for familiar faces: Population responses were most similar for familiar monkey faces (Fig. 2D, left) and were adjacent

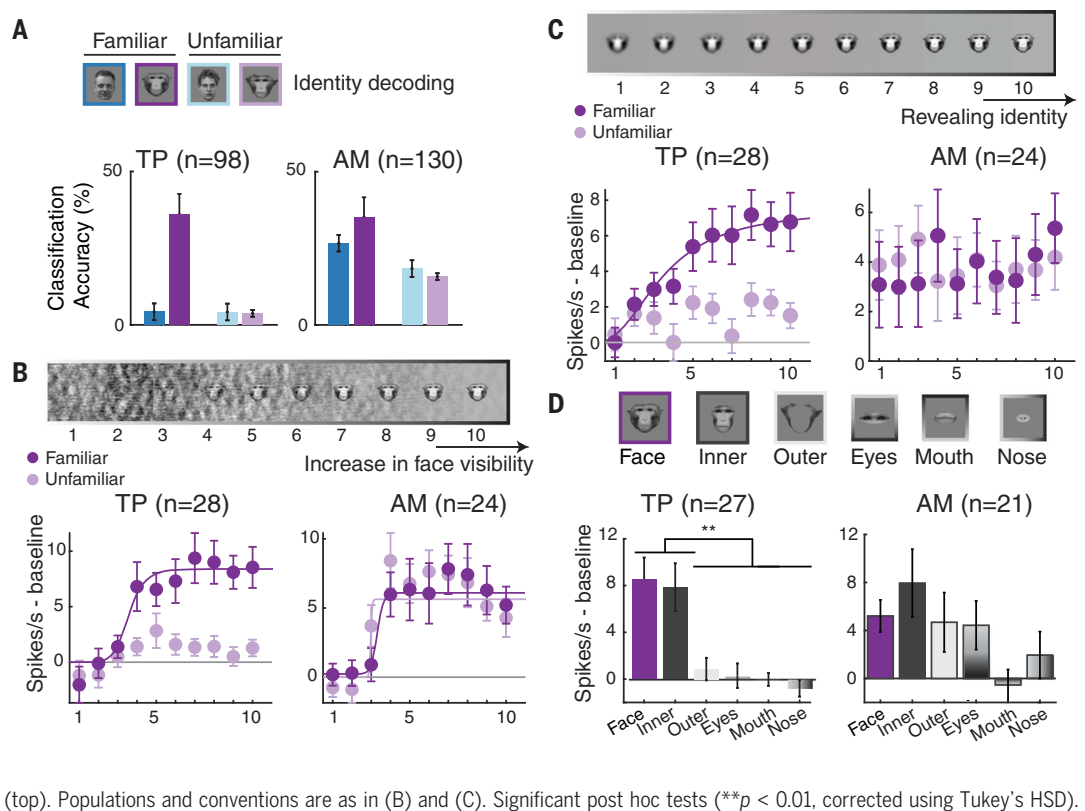
and separate from unfamiliar monkey faces in a two-dimensional representational space (Fig. 2E, left), supporting accurate decoding of only the familiar monkey category (Fig. 2F, left; see methods). In AM, population response similarity was high for all categories, and stimuli belonging to the same category, whether familiar or not, clustered together (Fig. 2, D and E, right). Although the separability of faces and objects was higher for AM [separability index (SI) = 0.57 ± 0.01] than TP (SI = 0.26 ± 0.01 , permutation test $p < 0.005$), the separability of a monkey familiar face cluster was higher in TP (SI = 0.73 ± 0.02 ; see methods) than in AM (SI = 0.43 ± 0.03 , permutation test $p < 0.005$). This fundamental difference between TP and AM was also reflected in category decoding results (Fig. 2F). Crucially, TP's familiarity selectivity did not result from passive visual exposure—subjects saw all pictures thousands of times—but rather from real-life personal encounters.

TP cells express one key property of face recognition units (3): modulation by face

Fig. 3. TP encodes identity information and mimics psychophysics of face recognition.

(A) Decoding accuracies (percentage of normalized classification accuracy) in TP (left) and AM (right) for identity discrimination among familiar human faces (dark blue), familiar monkey faces (violet), unfamiliar human faces (light blue), and unfamiliar monkey faces (lilac).

(B) TP and AM population responses to pictures of familiar and unfamiliar faces at 10 levels of phase scrambling (100 to 0%, left to right). Mean responses, SEM (error bars), and significant sigmoidal functions fits [solid lines, only shown for conditions with coefficient of determination (R^2) > 0.5] are shown. (C) TP and AM population responses to pictures of familiar and unfamiliar faces at 10 blurring levels (see methods). Populations and conventions are as in (B). (D) TP and AM population responses to pictures of whole and cropped faces (top). Populations and conventions are as in (B) and (C). Significant post hoc tests (** p < 0.01, corrected using Tukey's HSD).



familiarity. To achieve recognition, face recognition units also need to discriminate facial identities (as the TP example cells in Fig. 1D). Population decoding analyses within each of the four face categories (see methods) showed that the TP population discriminated between identities of familiar monkey faces, and only between these (Fig. 3A and fig. S3A, left; p < 0.005 permutation test). By contrast, AM reliably discriminated between identities in each face category (Fig. 3A and fig. S3A, right; p < 0.005 permutation tests). TP and AM encoded the identity of familiar monkeys through a mix of sparse and broadly tuned cells. The mean sparseness indexes for familiar monkey faces (see methods) was 0.65 in TP and 0.61 in AM (p = 0.26, Wilcoxon test), ranging in both areas from about 0.08 to 0.97.

Next, we tested whether TP cells show three functional signatures resembling the psychophysics of human face recognition. First, we determined whether TP responses exhibit an all-or-none perceptual threshold, as face detection does (12, 13). We created visual stimuli with different levels of phase scrambling for a given cell's preferred familiar and unfamiliar faces (Fig. 3B, top). Both TP and AM cells responded from a specific visibility threshold onward (Fig. 3B). We fit the spiking response of each cell to a sigmoidal function (see methods), whose exponent quantifies the steepness of the nonlinear effect. Response steepness depended

on the interaction of stimulus familiarity and area (two-way ANOVA interaction effect: $F_{1,100}$ = 6.89, p < 0.01). Post hoc tests revealed no significant differences in nonlinearity between familiar and unfamiliar faces in AM (p = 0.8) but a higher nonlinearity for familiar faces in TP (p < 0.01).

Second, we tested whether TP can directly and specifically support the recognition of familiar faces. In another experiment, we applied 10 steps of Gaussian blurring (14) to the preferred familiar and unfamiliar faces of each cell (Fig. 3C, top). Quantifying nonlinearity as above, we found response steepness to depend on the interaction of stimulus familiarity and area (Fig. 3C; two-way ANOVA interaction effect: $F_{1,100}$ = 4.16, p < 0.05). In TP, only familiar faces elicited this nonlinear response, whereas AM cells failed to show this effect altogether (Fig. 3C and fig. S3B; post hoc tests corrected using Tukey's HSD, p < 0.05).

Finally, another fundamental psychophysical property of familiar face recognition is that internal facial features are most informative about a familiar identity (15–17). We cropped familiar faces into an inner and outer component and then cropped the inner one further into eyes, mouth, and nose (Fig. 3D, top). These manipulations significantly affected TP [n = 27, one-way ANOVA yielded a significant effect of stimulus type on the spiking response (p < 0.001, $F_{5,157}$ = 48.07)]. TP cells responded

almost as much to the inner face alone as to the whole face (post hoc tests corrected using Tukey's HSD, p = 0.99), but only weakly to the outer face alone (Tukey's HSD, p < 0.01) (Fig. 3D and fig. S3C, left). Responses to the isolated inner face parts were minimal and did not add up to the response of the inner face. We found a similar nonlinear effect in TP, but not AM, when using decomposed face images in different frequency bands (fig. S3D).

TP neurons are highly face selective, but they might also respond to the whole social agent (i.e., face with body), thus resembling person identity nodes (3). However, TP's population responses were weaker to body images than to face images (Fig. 1C; two-sample Kolmogorov-Smirnov test, p < 0.01; compare fig. S4, A and B). To test whether body context could augment TP responses to faces (18), we presented pictures of entire familiar individuals, their isolated faces, and their isolated bodies (fig. S4C). In 27 TP cells tested, the response to the face alone was almost as strong as that to the entire individual (0.8 spikes/s difference at response peak, permutation tests, p < 0.05; fig. S4D), whereas isolated familiar bodies did not elicit a clear response.

Human psychophysics has found familiar face recognition to be robust to identity-preserving transformations (3) but suggested different encoding schemes [e.g., (19)]. We tested tuning to

two identity-preserving transformations: (i) in-depth head rotation, a transformation that has been characterized in face areas, including AM, before (*I*); and (ii) geometric image distortion that does not affect familiar face recognition (*20*). We found that TP cells are as robust to in-depth rotation as AM cells: A three-way ANOVA with in-depth rotation, face identity, and area as factors yielded no significant interaction effects between any of the factors (fig. S5, A to D; view \times identity \times area $F_{48,2535} = 0.201, p > 0.9$; area \times identity $F_{12,2532} = 0.63, p > 0.8$; area \times view $F_{4,2535} = 0.22, p > 0.9$; identity \times view

$F_{48,2532} = 0.34, p > 0.9$). Geometric deformations had no distinctive effect on AM and TP population responses (fig. S5, E and F; two-way ANOVA with distortion type and area as factors, interaction effects $F_{6,350} = 0.34, p > 0.9$).

The dominant models of face recognition (*3, 21, 22*) posit a sequential transition from perceptual face identity processing to face or person recognition. AM is located at the pinnacle of perceptual face processing (*I*), exhibiting an efficient code for physical face identity (*11, 23*). If face recognition units in TP are downstream from AM, their response

latencies should be systematically longer. We tested this prediction in three analyses.

First, population response latencies to the FOF stimulus set (Figs. 1D and 4, A and B; and fig. S1B) were not systematically different between face categories or areas [Fig. 4, A and B; and fig. S6; no significant interaction ($F_{3,312} = 1.17, p > 0.3$) or main effects for category ($F_{3,312} = 0.93, p > 0.4$) and brain area ($F_{1,312} = 3.3, p > 0.05$)].

Second, we analyzed performance time courses for five binary decoders in TP and AM (Fig. 4C; see methods): faces versus nonfaces

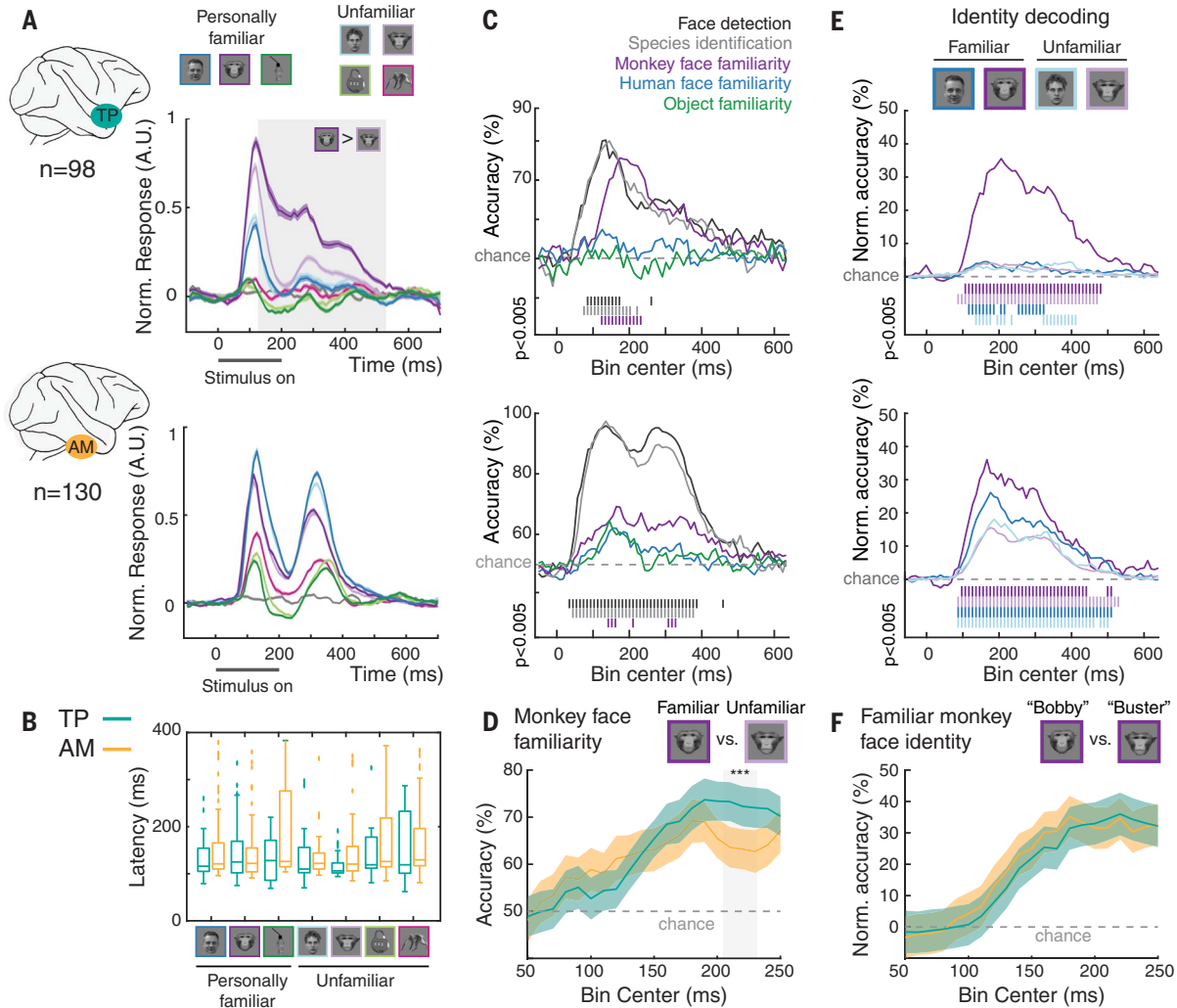


Fig. 4. Simultaneous and early familiar face processing in TP and AM.

(A) Average normalized peristimulus time histograms for TP (top) and AM (bottom) for all categories. Color shading indicates SEM; the gray shaded area indicates the time period of significantly larger responses to familiar than unfamiliar monkey faces (permutation tests, 1000 iterations, $p < 0.01$). Color code is shown at the top of the figure; the gray line represents the average response to gray background images (no visual stimuli). A.U., arbitrary units. (B) Response latencies in TP (green) and AM (yellow) for all categories. The box plot shows the median \pm 25% (boxes), the most extreme data points not considered outliers (whiskers), and the outliers (plotted individually). (C) Time courses of decoding performance of TP (top) and AM (bottom) population

responses for five contrasts. Vertical bars below the plots indicate significant decoding accuracies (permutation tests, $n = 200, p < 0.005$; see methods). (D) Fine-scale peristimulus time course of monkey familiarity information in TP (green) and AM (yellow). Shaded regions are the SD of the decoding accuracies over all the shuffled trials (repeated $n = 200$) and cross-validation splits. The gray shaded region indicates significant differences between accuracies in AM and TP (permutation tests, $n = 200, p < 0.005$). (E) Time courses of decoding performance of TP (top) and AM (bottom) population responses for within-category (top) face identification (percentage of normalized classification accuracy). Populations and conventions are as in (C). (F) Fine-scale peristimulus time course of familiar monkey face identity information in TP (green) and AM (yellow). Shaded regions are as in (D).

(face detection), human versus monkey faces (species identification), and familiar versus unfamiliar monkey faces, human faces, and objects (semantic classification). Peak decoding accuracy for face detection and species identification was higher for AM than TP ($p < 0.05$, permutation tests). The reverse was the case for semantic classification of monkey faces ($p < 0.05$, permutation tests; Fig. 4D), which seems to emerge faster in TP. However, we could not detect any significant latency differences between AM and TP for any of the binary classifiers ($p > 0.1$, permutation tests; Fig. 4D).

Third, we analyzed the time courses of identity decoding between familiar monkey faces in TP and AM (Fig. 4, E and F). Onset and peak times for decoding familiar monkey identities were similar in both areas ($p > 0.1$, permutation tests; Fig. 4F).

We report here the discovery of a new class of face memory cells. They share the conjunction of facial shape and familiarity selectivity with Lettvin's grandmother cell hypothesis (2), Konorski's "gnostic unit" (24), and Bruce and Young's face recognition unit (3). TP differs, however, from the grandmother cell hypothesis in that the identity of a familiar face is not represented by a single neuron but rather by a distributed population response. Although highly face selective, TP cells are qualitatively different from inferotemporal face cells, even those at the apex of the face-processing system in area AM (1, 11): The new cells are selective not for faces in general but for personally familiar ones, encode personally familiar faces both categorically and individually, and exhibit key functional characteristics of face recognition. They also differ from mediotemporal person concept cells (6) by a much shorter response latency and selectivity toward the inner face. TP cells encode familiar face identities not by single cells—as the grandmother neuron concept (2) suggested—but as populations (24).

Past studies have found that visual familiarity with a stimulus reduces activity throughout object and face recognition systems and have described this reduction as repetition suppression, predictive normalization, or sparsification (9, 25–29). These effects result primarily from repeated stimulus exposure. Our finding of (i) selective and specific response enhancement (ii) that is robust across multiple transformations (iii) in a spatially localized brain region (iv) outside of core object and face processing systems (v) as a result of personal real-life experience is a fundamentally different memory mechanism. Memory consolidation theories agree that long-term memories are stored in the cortex (10, 30). Here, we show that personal real-life experience has the astonishing capacity to carve out a small piece of cortex and consolidate very specific memories there. If familiar conspecific face memories are stored

in one small region of the temporal pole, other modules with similar specificity probably exist nearby. More complex knowledge systems, for example, about individuals and their social relationships (31), may be built upon these foundations. This would explain person-related agnosia after damage to the temporal pole (8).

TP signals face information surprisingly fast, which might explain the astonishing speed of familiar face recognition (32, 33). The simultaneity of familiar face processing in TP and AM and the qualitative differences in their selectivity—TP functionally mimics face recognition, whereas AM does not—suggest that AM and TP may operate functionally and possibly structurally in parallel. For example, a specific subset of short-latency AM cells may provide face-identity information to TP. Alternatively, in agreement with the lack of documented direct connections between AM and TP (34), there may be two pathways of face and person memory: one pathway from AM to a perirhinal face area (9), entorhinal cortex, and the hippocampus and a second pathway to TP. The first pathway would facilitate the formation of new associations (35–37) and the feeling of familiarity (38). The second pathway would allow for direct access—without the need to recapitulate all stages of the first pathway—to long-term semantic face information in the temporal pole.

REFERENCES AND NOTES

- W. A. Freiwald, D. Y. Tsao, *Science* **330**, 845–851 (2010).
- C. G. Gross, *Neuroscientist* **8**, 512–518 (2002).
- V. Bruce, A. Young, *Br. J. Psychol.* **77**, 305–327 (1986).
- D. I. Perrett, J. K. Hietanen, M. W. Oram, P. J. Benson, *Philos. Trans. R. Soc. London Ser. B* **335**, 23–30 (1992).
- N. Kanwisher, J. McDermott, M. M. Chun, *J. Neurosci.* **17**, 4302–4311 (1997).
- R. Q. Quiroga, L. Reddy, G. Kreiman, C. Koch, I. Fried, *Nature* **435**, 1102–1107 (2005).
- K. Nakamura, K. Matsumoto, A. Mikami, K. Kubota, *J. Neurophysiol.* **71**, 1206–1221 (1994).
- I. R. Olson, A. Plotzker, Y. Ezyyat, *Brain* **130**, 1718–1731 (2007).
- S. M. Landi, W. A. Freiwald, *Science* **357**, 591–595 (2017).
- D. N. Barry, E. A. Maguire, *Trends Cogn. Sci.* **23**, 635–636 (2019).
- L. Chang, D. Y. Tsao, *Cell* **169**, 1013–1028.e14 (2017).
- M. I. Gobbini et al., *PLOS ONE* **8**, e66620 (2013).
- P. Sinha, B. Balas, Y. Ostrovsky, R. Russell, *Proc. IEEE* **94**, 1948–1962 (2006).
- M. Ramon, L. Vizioli, J. Liu-Shuang, B. Rossion, *Proc. Natl. Acad. Sci. U.S.A.* **112**, E4835–E4844 (2015).
- T. J. Andrews, J. Davies-Thompson, A. Kingstone, A. W. Young, *J. Neurosci.* **30**, 3544–3552 (2010).
- H. D. Ellis, J. W. Shepherd, G. M. Davies, *Perception* **8**, 431–439 (1979).
- A. W. Young, D. C. Hay, K. H. McWeeny, B. M. Flude, A. W. Ellis, *Perception* **14**, 737–746 (1985).
- C. Fisher, W. A. Freiwald, *Proc. Natl. Acad. Sci. U.S.A.* **112**, 14717–14722 (2015).
- A. M. Burton, R. Jenkins, P. J. B. Hancock, D. White, *Cognit. Psychol.* **51**, 256–284 (2005).
- A. Sandford, A. M. Burton, *Cognition* **132**, 262–268 (2014).
- M. I. Gobbini, J. V. Haxby, *Neuropsychologia* **45**, 32–41 (2007).
- V. Natu, A. J. O'Toole, *Br. J. Psychol.* **102**, 726–747 (2011).
- K. W. Koyano et al., *Curr. Biol.* **31**, 1–12.e5 (2021).
- J. Konorski, *Integrative Activity of the Brain: An Interdisciplinary Approach* (Univ. Chicago Press, 1967).
- J. Z. Xiang, M. W. Brown, *Neuropharmacology* **37**, 657–676 (1998).
- D. J. Freedman, M. Riesenhuber, T. Poggio, E. K. Miller, *Cereb. Cortex* **16**, 1631–1644 (2006).
- T. Meyer, C. R. Olson, *Proc. Natl. Acad. Sci. U.S.A.* **108**, 19401–19406 (2011).
- L. Woloszyn, D. L. Sheinberg, *Neuron* **74**, 193–205 (2012).
- C. M. Schwiedrzik, W. A. Freiwald, *Neuron* **96**, 89–97.e4 (2017).
- W. B. Scoville, B. Milner, *J. Neurol. Neurosurg. Psychiatry* **20**, 11–21 (1957).
- J. Sliwa, W. A. Freiwald, *Science* **356**, 745–749 (2017).
- K. Dobs, L. Isik, D. Pantazis, N. Kanwisher, *Nat. Commun.* **10**, 1258 (2019).
- M. Visconti di Oleggio Castello, M. I. Gobbini, *PLOS ONE* **10**, e0136548 (2015).
- P. Grimaldi, K. S. Saleem, D. Tsao, *Neuron* **90**, 1325–1342 (2016).
- Y. Miyashita, *Nature* **335**, 817–820 (1988).
- M. J. Ison, R. Quiroga, I. Fried, *Neuron* **87**, 220–230 (2015).
- Y. Miyashita, *Nat. Rev. Neurosci.* **20**, 577–592 (2019).
- K. Tamura et al., *Science* **357**, 687–692 (2017).
- S. M. Landi, P. Viswanathan, S. Serene, W. A. Freiwald, A fast link between face perception and memory in the temporal pole: Dataset, Version 3. Figshare (2021); <http://dx.doi.org/10.6084/m9.figshare.14642619>.

ACKNOWLEDGMENTS

This work is dedicated to the memory of the late Charles Gross. We thank A. Gonzalez for help with animal training and care, veterinary services and animal husbandry staff of The Rockefeller University for care of the subjects, and L. Yin for administrative assistance. Unfamiliar face stimuli were obtained from the PrimFace database (<https://visiome.neuroinf.jp/primface>), which is funded by Grant-in-Aid for Scientific Research on Innovative Areas, "Face Perception and Recognition," from the Ministry of Education, Culture, Sports, Science, and Technology (MEXT), Japan. **Funding:** This work was supported by the Howard Hughes Medical Institute International Student Research Fellowship (to S.M.L.); the German Primate Centre Scholarship (to P.V.); the Simons Foundation Junior Fellowship (to P.V.); the Center for Brains, Minds & Machines funded by National Science Foundation STC award CCF-1231216; the National Eye Institute of the National Institutes of Health (R01 EY021594 to W.A.F.); the National Institute of Mental Health of the National Institutes of Health (R01 MH105397 to W.A.F.); the National Institute of Neurological Disorders and Stroke of the National Institutes of Health (R01NS110901 to W.A.F.); the Department of the Navy, Office of Naval Research under ONR award number N00014-20-1-2292; and The New York Stem Cell Foundation (to W.A.F.). The content is solely the responsibility of the authors and does not necessarily represent the official views of the National Institutes of Health.

Author contributions: Conceptualization: S.M.L., W.A.F. Data curation: S.M.L., S.S. Formal analysis: S.M.L. Investigation: S.M.L., P.V. Visualization: S.M.L., S.S. Funding acquisition: W.A.F. Writing – original draft: S.M.L., P.V., W.A.F. Writing – review and editing: S.M.L., P.V., S.S., W.A.F. **Competing interests:** The authors declare that they have no competing interests. **Data and materials availability:** There are no restrictions on data availability, and data are deposited on the FigShare repository (39).

SUPPLEMENTARY MATERIALS

science.sciencemag.org/content/373/6554/581/suppl/DC1
Materials and Methods

Figs. S1 to S6
References (40–47)
MDAR Reproducibility Checklist

[View/request a protocol for this paper from Bio-protocol.](#)

24 March 2021; accepted 22 June 2021
Published online 1 July 2021
10.1126/science.abi6671

A fast link between face perception and memory in the temporal pole

Sofia M. LandiPooja ViswanathanStephen SereneWinrich A. Freiwald

Science, 373 (6554), • DOI: 10.1126/science.abi6671

What makes familiar faces so special?

Explicit semantic information in the brain is generated by gradually stripping off the specific context in which the item is embedded. A particularly striking example of such explicit representations are face-specific neurons. Landi *et al.* report the properties of neurons in a small region of the monkey anterior temporal cortex that respond to the sight of familiar faces. These cells respond to the internal features of familiar faces but not unknown faces. Some of these responses are very highly selective, reliably responding to only one face out of a vast number of other stimuli. These findings will advance our understanding about where and how semantic memories are stored in the brain. —PRS

View the article online

<https://www.science.org/doi/10.1126/science.abi6671>

Permissions

<https://www.science.org/help/reprints-and-permissions>

Use of this article is subject to the [Terms of service](#)

Science (ISSN) is published by the American Association for the Advancement of Science. 1200 New York Avenue NW, Washington, DC 20005. The title *Science* is a registered trademark of AAAS.

Copyright © 2021 The Authors, some rights reserved; exclusive licensee American Association for the Advancement of Science. No claim to original U.S. Government Works