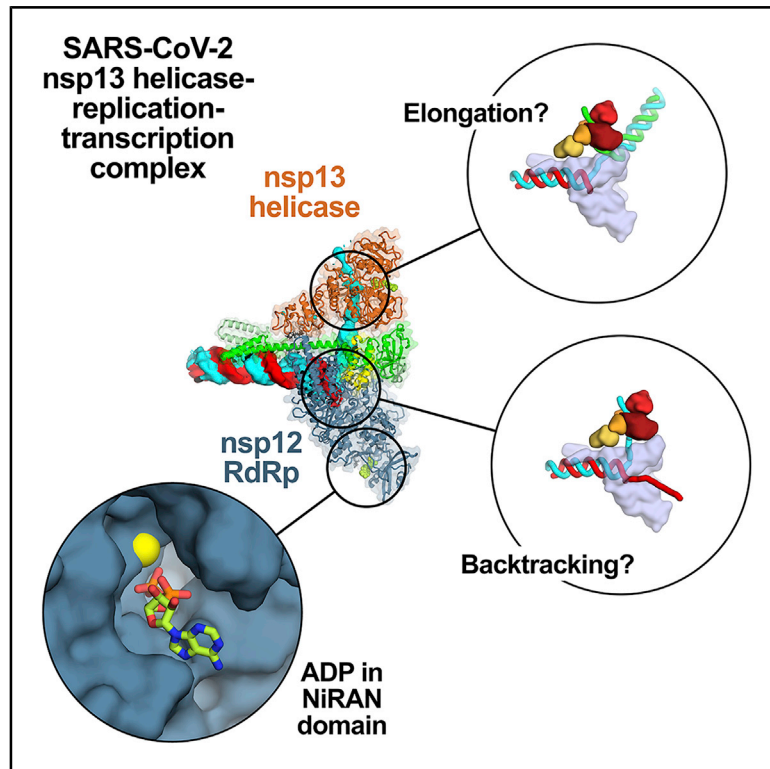


# Structural Basis for Helicase-Polymerase Coupling in the SARS-CoV-2 Replication-Transcription Complex

## Graphical Abstract



## Authors

James Chen, Brandon Malone, Eliza Llewellyn, ..., Tarun M. Kapoor, Seth A. Darst, Elizabeth A. Campbell

## Correspondence

darst@rockefeller.edu (S.A.D.),  
campbee@rockefeller.edu (E.A.C.)

## In Brief

Chen et al. present cryo-EM structures of the SARS-CoV-2 RNA-dependent RNA polymerase (RdRp) holoenzyme (nsp7/ nsp8/nsp12) containing an RNA template product in complex with the viral helicase (nsp13). The work provides insight into assembly and function of the multi-subunit protein machine and how it might be targeted therapeutically to treat COVID-19.

## Highlights

- Structure of SARS-CoV-2 replication-transcription complex (RTC) with nsp13 helicases
- The nsp13 NTPase domains sit in front of the RCT, constraining functional models
- Nsp13 may drive RTC backtracking, affecting proofreading and template switching
- Structural analysis of ADP-Mg<sup>2+</sup>-bound NiRAN domain, a potential antiviral target



## Article

# Structural Basis for Helicase-Polymerase Coupling in the SARS-CoV-2 Replication-Transcription Complex

James Chen,<sup>1,6</sup> Brandon Malone,<sup>1,6</sup> Eliza Llewellyn,<sup>1</sup> Michael Grasso,<sup>2</sup> Patrick M.M. Shelton,<sup>2</sup> Paul Dominic B. Olinares,<sup>3</sup> Kashyap Maruthi,<sup>4</sup> Edward T. Eng,<sup>4</sup> Hasan Vatandaslar,<sup>5</sup> Brian T. Chait,<sup>3</sup> Tarun M. Kapoor,<sup>2</sup> Seth A. Darst,<sup>1,7,\*</sup> and Elizabeth A. Campbell<sup>1,\*</sup>

<sup>1</sup>Laboratory of Molecular Biophysics, The Rockefeller University, New York, NY 10065, USA

<sup>2</sup>Laboratory of Chemistry and Cell Biology, The Rockefeller University, New York, NY 10065, USA

<sup>3</sup>Laboratory of Mass Spectrometry and Gaseous Ion Chemistry, The Rockefeller University, New York, NY 10065, USA

<sup>4</sup>The National Resource for Automated Molecular Microscopy, Simons Electron Microscopy Center, New York Structural Biology Center, New York, NY 10027, USA

<sup>5</sup>Institute of Molecular Health Sciences, ETH Zürich, 8093 Zürich, Switzerland

<sup>6</sup>These authors contributed equally

<sup>7</sup>Lead Contact

\*Correspondence: [darst@rockefeller.edu](mailto:darst@rockefeller.edu) (S.A.D.), [campbee@rockefeller.edu](mailto:campbee@rockefeller.edu) (E.A.C.)

<https://doi.org/10.1016/j.cell.2020.07.033>

## SUMMARY

SARS-CoV-2 is the causative agent of the 2019–2020 pandemic. The SARS-CoV-2 genome is replicated and transcribed by the RNA-dependent RNA polymerase holoenzyme (subunits nsp7/nsp8<sub>2</sub>/nsp12) along with a cast of accessory factors. One of these factors is the nsp13 helicase. Both the holo-RdRp and nsp13 are essential for viral replication and are targets for treating the disease COVID-19. Here we present cryoelectron microscopic structures of the SARS-CoV-2 holo-RdRp with an RNA template product in complex with two molecules of the nsp13 helicase. The Nidovirales order-specific N-terminal domains of each nsp13 interact with the N-terminal extension of each copy of nsp8. One nsp13 also contacts the nsp12 thumb. The structure places the nucleic acid-binding ATPase domains of the helicase directly in front of the replicating-transcribing holo-RdRp, constraining models for nsp13 function. We also observe ADP-Mg<sup>2+</sup> bound in the nsp12 N-terminal nidovirus RdRp-associated nucleotidyltransferase domain, detailing a new pocket for anti-viral therapy development.

## INTRODUCTION

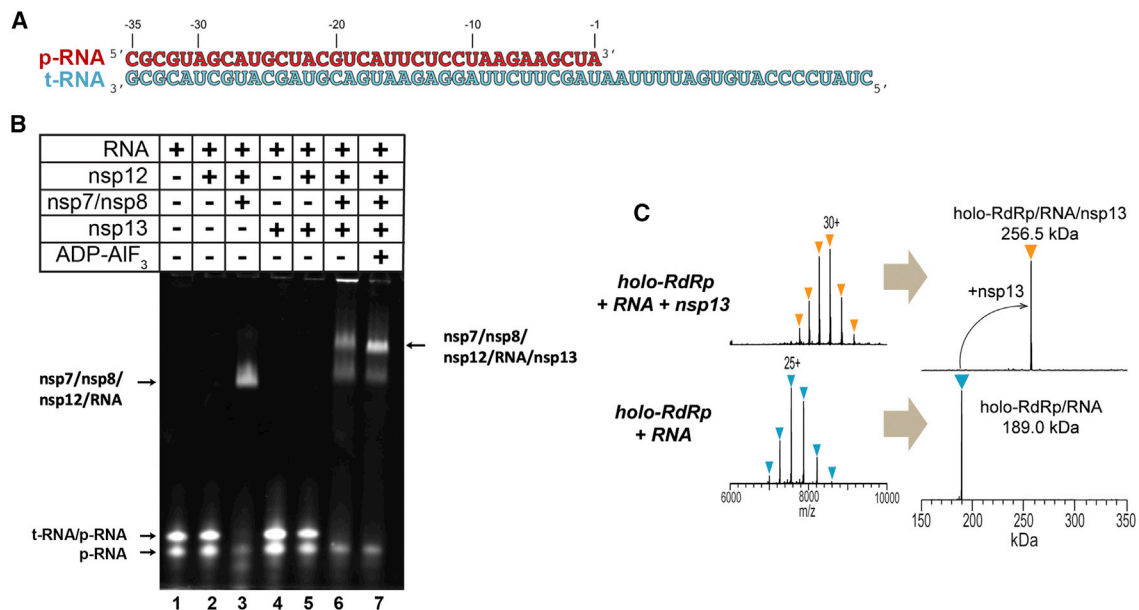
Coronaviruses (CoVs) are positive-strand RNA (+RNA) viruses belonging to the order Nidovirales (de Groot et al., 2012). These viruses are responsible for several zoonotic infections (Snijder et al., 2016). Deadly occurrences include the 2003 severe acute respiratory syndrome (SARS) pandemic caused by SARS-CoV-1 and Middle Eastern respiratory syndrome (MERS) outbreaks caused by MERS-CoV (Hilgenfeld and Peiris, 2013). SARS-CoV-2, a  $\beta$ -CoV, has been identified as the cause of the current globally devastating CoV disease 2019 (COVID-19) pandemic (Wu et al., 2020; Zhou et al., 2020).

The Nidovirales order of viruses contains the largest known RNA genomes (Nga et al., 2011; Saberi et al., 2018). The nidovirus RNA-dependent RNA polymerase (RdRp; encoded by non-structural protein 12 [nsp12]) functions in a holo-RdRp (comprising nsp7/nsp8<sub>2</sub>/nsp12) to synthesize all viral RNA molecules (Kirchdoerfer and Ward, 2019; Subissi et al., 2014). The

RdRp is the target for antiviral agents such as remdesivir (Agostini et al., 2018; Yin et al., 2020). In addition to its central role in replication and transcription of the viral genome, the RdRp contains an N-terminal nidovirus RdRp-associated nucleotidyltransferase (NiRAN) domain with unknown function but with enzymatic activity that is also essential for viral propagation (Lehmann et al., 2015a).

The holo-RdRp is thought to coordinate with a number of accessory factors during the viral life cycle (Snijder et al., 2016; Sola et al., 2015). One of these accessory factors is nsp13, a superfamily 1B (SF1B) helicase that can unwind DNA or RNA in an NTP-dependent manner with a 5' > 3' polarity (Ivanov and Ziebuhr, 2004; Lee et al., 2010; Seybert et al., 2000a, 2000b; Tanner et al., 2003). The helicase is essential for replication in the nidovirus equine arteritis virus (EAV) (van Dinten et al., 2000; Seybert et al., 2000a, 2005) and the  $\beta$ -CoV murine hepatitis virus (Zhang et al., 2015) and is presumed to be essential in all nidoviruses (Lehmann et al., 2015b). The helicase is thought to





**Figure 1. SARS-CoV-2 nsp13 Helicase Forms a Stable Complex with the Holo-RdRp and an RNA Scaffold**

(A) The RNA scaffold used for biochemistry, native mass spectrometry (nMS), and cryo-EM.

(B) A native gel electrophoretic mobility shift assay reveals that nsp13 forms a stable complex with holo-RdRp:RNA. The 4.5% polyacrylamide gel was visualized with Gel Red to stain the RNA.

(C) nMS spectra and the corresponding deconvoluted spectra for the holo-RdRp containing the RNA scaffold (A) with and without nsp13. The measured mass for the holo-RdRp:RNA complex corroborates the established stoichiometry of 1:2:1 for nsp7:nsp8:nsp12:RNA (Hillen et al., 2020; Kirchdoerfer and Ward, 2019; Wang et al., 2020; Yin et al., 2020), respectively (bottom). Addition of the 67.5-kDa nsp13 helicase to the RNA-bound holo-RdRp sample forms a transcription complex/helicase assembly with 1:1 stoichiometry (top).

See also Figures S1 and S2.

play crucial roles in many aspects of the viral life cycle, some of which can be uncoupled by point mutations (van Dinten et al., 1996; van Marle et al., 1999). Besides helicase activities, nsp13 harbors RNA 5'-triphosphatase activity, which may play a role in mRNA capping (Ivanov and Ziebuhr, 2004; Ivanov et al., 2004).

In addition to the two canonical RecA ATPase domains of SF1 helicases (Sai Krishnan et al., 2009; Singleton et al., 2007), nsp13 contains three domains unique to nidovirus helicases: an N-terminal zinc-binding domain (ZBD), a stalk, and a 1B domain (Hao et al., 2017; Jia et al., 2019; Lehmann et al., 2015b). The role of these domains in nsp13 function *in vivo* is unclear, but substitutions in these domains or the interfaces between them have disruptive effects on *in vitro* helicase activity as well as on viral propagation (van Dinten et al., 1996, 2000; Hao et al., 2017; van Marle et al., 1999; Seybert et al., 2005).

Biochemical and biophysical studies suggest that nsp13 and nsp12 interact (Adedeji et al., 2012; Jia et al., 2019), but a stable complex has not been biochemically isolated or structurally characterized, and the mechanistic role of the helicase in SARS-CoV-2 replication-transcription is unknown. Here we generate a stable nsp13:holo-RdRp:RNA complex and determine its structure by cryoelectron microscopy (cryo-EM) to 3.5-Å nominal resolution. The architecture of the complex provides constraints on models for nsp13 function and suggests a possible role of nsp13 in generating backtracked replication-transcription complexes for proofreading, template switching during sub-genomic RNA transcription, or both. Our structure

also resolves ADP-Mg<sup>2+</sup> in the active site of the nidovirus-specific NiRAN domain, defining a new pocket for anti-viral therapy development.

## RESULTS

### The nsp13 Helicase Forms a Stable Complex with the Holo-RdRp Elongation Complex

To investigate the potential nsp13:holo-RdRp complex and its role in replication-transcription, we prepared active recombinant SARS-CoV-2 holo-RdRp and nsp13 (Figures S1 and S2A). Our measured  $k_{cat}$  ( $\sim 15\text{ s}^{-1}$ ) for SARS-CoV-2 nsp13 (Figure S2) is similar to reported  $k_{cat}$  values for SARS-CoV hexahistidine (His<sub>6</sub>)-nsp13 ( $19\text{ s}^{-1}$ ; Tanner et al., 2003) or SARS-CoV MBP-nsp13 ( $2.3\text{ s}^{-1}$ ; Ivanov et al., 2004) (there is one conservative amino acid substitution between SARS-CoV and SARS-CoV-2 nsp13 proteins, SARS-CoV-2 nsp13-Val570 is Ile in SARS-CoV nsp13) but not to  $k_{cat}$  values for SARS-CoV His<sub>6</sub>-nsp13 and glutathione S-transferase (GST)-nsp13 ( $0.2\text{ s}^{-1}$  and  $104\text{ s}^{-1}$ , respectively; Adedeji et al., 2012). Differences in expression and purification protocols as well as different ATPase assays used could explain the variability.

We used native electrophoretic mobility shift assays to test binding of holo-RdRp and nsp13 to an RNA scaffold (Figures 1A and 1B). Nsp12 required nsp7:nsp8 to bind the RNA (Figure 1B, compare lanes 2 and 3), and addition of nsp13 to the holo-RdRp:RNA complex caused a super-shift, indicating stable

complex formation (Figure 1B, lane 6). Addition of ADP-AIF<sub>3</sub> (Chabre, 1990), which inhibits nsp13 ATPase activity (Figure S2C), sharpened the super-shifted band (Figure 1C, lane 7), suggesting formation of a more stable, homogeneous complex. A stable complex was also detected using native mass spectrometry (nMS), revealing a stoichiometry of nsp7:nsp8<sub>2</sub>:nsp12:nsp13 + RNA scaffold (Figure 1C). The ATPase activity of nsp13 was maintained within the complex (Figures S2A and S2B).

### Structure of the nsp13:holo-RdRp:RNA Complex

To determine the structural organization of the nsp13(ADP-AIF<sub>3</sub>):holo-RdRp:RNA complex (hereafter called the nsp13-replication-transcription complex [nsp13-RTC]), we analyzed the samples by single-particle cryo-EM. An initial dataset collected in the absence of detergent (Figure S3A) yielded poor maps because of severe particle orientation bias (Figures S3B–S3D). The particle orientation bias was eliminated by adding the detergent 3-[(3-cholamidopropyl)dimethylammonio]-2-hydroxy-1-propanesulfonate (CHAPSO), shown previously to reduce preferred particle orientation by limiting particle adsorption to the air/water interface (Chen et al., 2019), yielding isotropic maps (Figures S4 and S5).

The sample comprised three major classes: 67% of the particles belong to an nsp13<sub>2</sub>-RTC, 20% form nsp13<sub>1</sub>-RTC, and 13% form a dimer of the nsp13<sub>2</sub>-RTC ((nsp13<sub>2</sub>-RTC)<sub>2</sub>; Figure S4A). The major class (nsp13<sub>2</sub>-RTC) yielded a 3D reconstruction and refined model at a nominal resolution of 3.5 Å (Figure 2; Figures S4B–S4F; Table S1). The structure resolves the complete, post-translocated holo-RdRp:RNA complex to roughly between 2.8–3.3 Å resolution (Figure S4B), including the nsp8 N-terminal extensions that interact with the upstream duplex RNA and the complete NiRAN domain (Hillen et al., 2020; Wang et al., 2020).

In the nsp13<sub>2</sub>-RTC, the nidovirus-specific nsp13-ZBDs (Figure 2A) interact with the nsp8 N-terminal extensions; one nsp13-ZBD (nsp13.1-ZBD) interacts with nsp8b, whereas the other (nsp13.2-ZBD) interacts with nsp8a (Figure 2). The nsp13.1-ZBD interaction with the holo-RdRp is tripartite; besides nsp8b, the interaction includes the tip of the nsp12 thumb domain (Figure 2C). These interactions involve multiple residues that are universally conserved among  $\alpha$ - and  $\beta$ -CoV (Figure 3; Data S1 and S2).

In addition to the nsp13.1-ZBD:nsp8b:nsp12 thumb tripartite interaction, nsp13.1-RecA1 is braced against nsp7 and the nsp8b head (Figure 2C). Other than the conserved nsp13.2-ZBD:nsp8a interaction (Figure 3B), nsp13.2 only makes additional interactions with nsp13.1 (Figure 2B).

Our cryo-EM analyses show that nsp13<sub>1</sub>-RTC and nsp13<sub>2</sub>-RTC complexes can exist. Nsp12 (the main RTC component) and nsp13 are expressed from the same viral open reading frame (ORF) as a single polyprotein (de Groot et al., 2012) and so are present at equivalent concentrations *in vivo* (Bouhaddou et al., 2020) (nsp13 was also added at an approximately 1:1 ratio to the RTC to prepare the cryo-EM samples). Because the nsp13<sub>2</sub>-RTC is resolved to much higher resolution (Figure S4), most of our analyses in this manuscript focus on this complex, but both complexes could be physiologically relevant. The disposition of nsp13.1 in nsp13<sub>1</sub>-RTC is nearly identical to its

disposition in nsp13<sub>2</sub>-RTC (Figure S6A), justifying our use of the higher-resolution nsp13<sub>2</sub>-RTC structure as the basis for our analyses. Because nsp13.2 is never present without nsp13.1 (Figures S3A and S4A), nsp13.1 appears to be stably bound, whereas nsp13.2 is dissociable. Only nsp13<sub>1</sub>-RTC was observed in the nMS analysis (Figure 1C), but the nMS solution conditions, electrospray process, and transition to the gas phase may have led to dissociation of nsp13.2, likely explaining the discrepancy with the cryo-EM analyses.

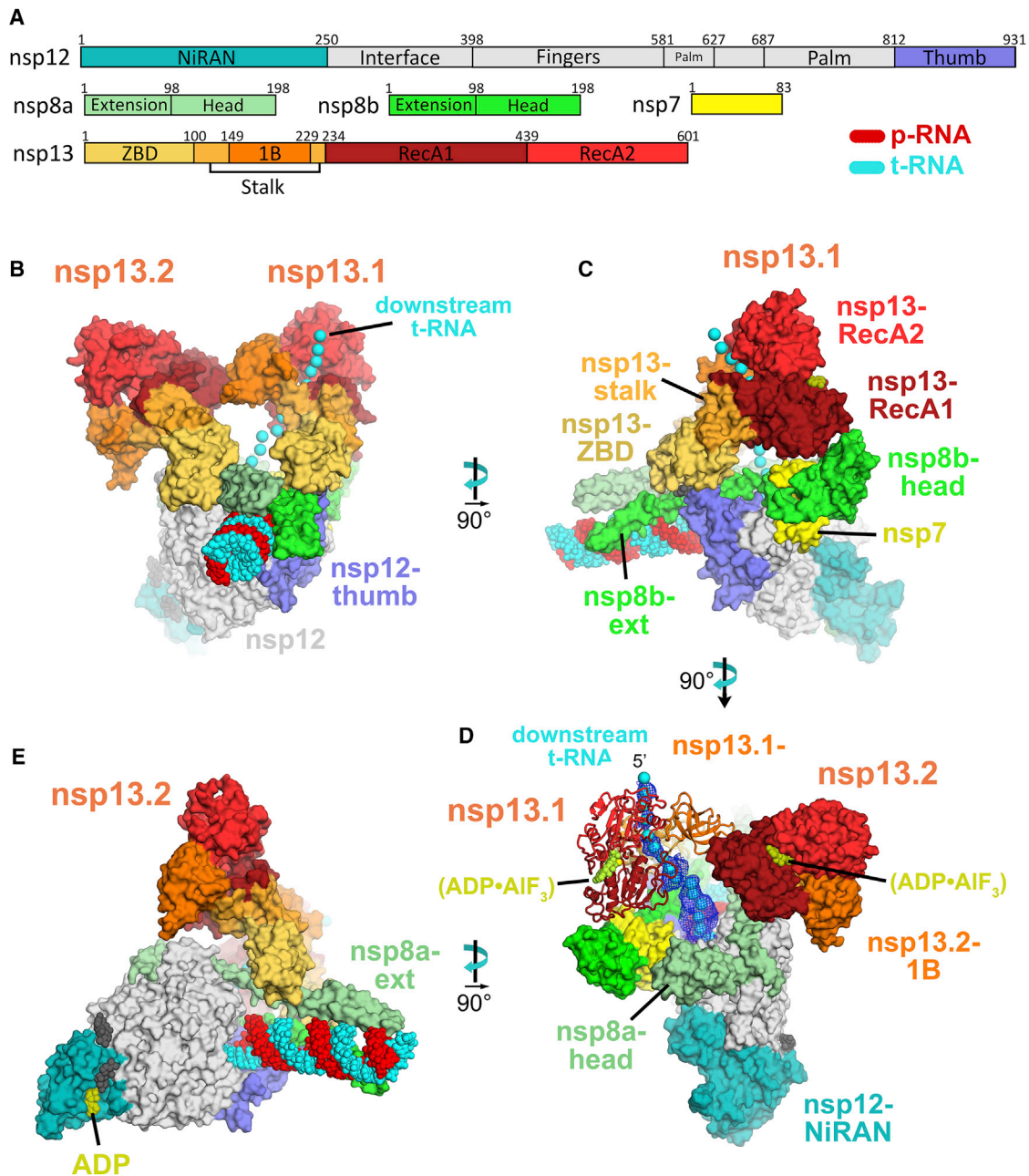
The holo-RdRp:RNA complex and interactions with the nsp13-ZBDs were well resolved in the cryo-EM map (Figures S4B and S5G), but structural heterogeneity in the nsp13-1B and RecA domains gave rise to poorly resolved maps that could not be improved by local refinement procedures. Maps filtered to the local resolution (Cardone et al., 2013) were used to model the overall domain orientations, and difference maps revealed that the added ADP-AIF<sub>3</sub> was bound, but the low resolution of the maps prevented detailed modeling.

The nsp13.1-ZBD interface with the holo-RdRp includes an adventitious CHAPSO molecule (Figure 3A). Despite this, the following points speak to the biological relevance of the complex. (1) The ATPase activity of nsp13, a measurable enzymatic property of the complex, was not significantly affected by the presence of CHAPSO (Figure S2B). (2) The nsp13.1:holo-RdRp interface (which includes CHAPSO) involves mutually conserved nsp13.1-ZBD, nsp8b, and nsp12 thumb residues that comprise a subset of the conserved residues participating in the nsp13.2-ZBD:nsp8a interaction that is free from CHAPSO (Figure 3). Thus, the presence of CHAPSO in the nsp13.1:holo-RdRp interface did not generate an entirely new interface. (3) In the absence of CHAPSO, the cryo-EM reconstructions were not suitable for detailed modeling and refinement because of severe particle orientation bias (Figure S3), but domain orientations could be modeled. Comparison with the no-detergent nsp13<sub>2</sub>-RTC map revealed that the presence of CHAPSO slightly altered the disposition of the nsp13.1-ZBD with respect to nsp8b, but the overall architecture of the complex was the same (Figure S6B).

### The NiRAN Domain Binds ADP-Mg<sup>2+</sup>

Nidovirus RdRps contain an N-terminal domain that is lacking in other viral RdRps, the NiRAN domain. The target of NiRAN domain nucleotidyltransferase activity is unknown, but the activity is essential for viral propagation in EAV and SARS-CoV (Lehmann et al., 2015a). In addition to ADP-AIF<sub>3</sub> bound in the NTP site of each nsp13 helicase, ADP-Mg<sup>2+</sup> was clearly resolved bound to the nsp12-NiRAN domain (Figure 4), prompting us to further investigate this domain.

Previously, a structure-based search with the partial NiRAN domain resolved in the SARS-CoV holo-RdRp structure revealed significant structural homology to protein kinases (Kirchdoerfer and Ward, 2019). This, combined with the NiRAN domain nucleotidyltransferase activity identified by (Lehmann et al., 2015a), led Kirchdoerfer and Ward (2019) to suggest a functional analogy with the pseudokinase *Pseudomonas syringae* SelO (D.E. Shaw Research (2020)). SelO, with homologs widespread among eukaryotes and also common in prokaryotes (Dudkiewicz et al., 2012), is a pseudokinase containing a kinase fold but lacking key catalytic residues of canonical kinases. Nevertheless, structural



**Figure 2. Overall Structure of the SARS-CoV2 nsp13 Helicase with the Holo-RdRp:RNA Replication-Transcription Complex (RTC)**

(A) Schematic illustrating the domain structure of SARS-CoV-2 holo-RdRp (nsp7, nsp8, and nsp12) and nsp13. Structural domains discussed in the text are labeled. The color coding corresponds to the figures throughout this manuscript unless otherwise specified.

(B–E) Orthogonal views showing the overall architecture of the nsp13<sub>2</sub>-RTC. Proteins are shown as molecular surfaces (except nsp13.1 in D) and RNA as atomic spheres. Adventitious CHAPSO detergent molecules are shown as atomic spheres and colored dark gray. The path of downstream tRNA through the nsp13.1 helicase, shown as cyan spheres, is revealed with low-pass-filtered (6 Å) difference density (shown in D).

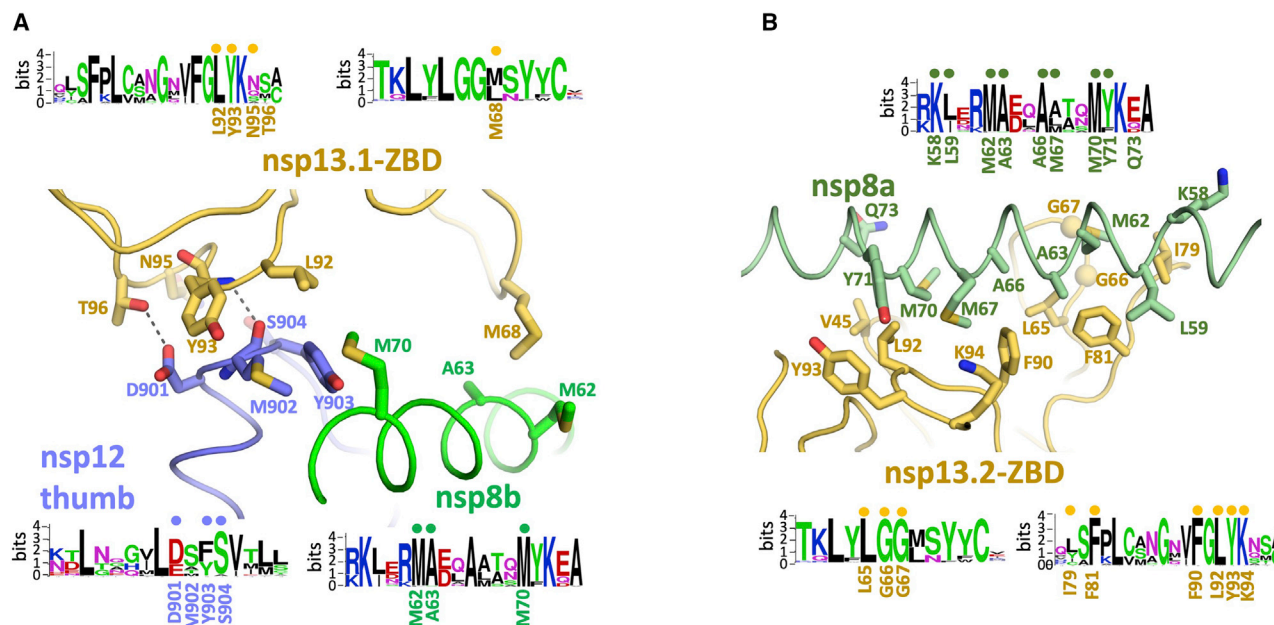
(B) Two copies of the nsp13 helicase bind to the RTC. Nsp13.1 forms a tripartite interaction with the nsp8b extension and the nsp12 thumb via the nsp13.1-ZBD. The 5' end of the tRNA extrudes through the nucleic acid binding channel of nsp13.1. The two helicases interact via the nsp13.1-1B domain and the nsp13.2-RecA1 domain.

(C) In addition to the nsp13.1-ZBD:nsp8b extension:nsp12 thumb tripartite interaction, nsp13.1-RecA1 interacts with nsp7 and the nsp8b head.

(D) ADP·AIF<sub>3</sub> is modeled in the NTP binding site of each helicase. The low-pass-filtered (6 Å) cryo-EM difference density revealing the path of the downstream t-RNA is shown (dark blue mesh).

(E) The nsp13.2-ZBD interacts with the nsp8a extension. ADP·Mg<sup>2+</sup> is bound to the NiRAN domain.

See also [Figures S3–S6](#), [Table S1](#), and [Video S1](#).



**Figure 3. Interactions of the nsp13-ZBDs with the RTC**

(A and B) Views of the nsp13-ZBD:RTC interactions. Proteins are shown as  $\alpha$ -carbon backbone worms. Side chains that make protein:protein interactions are shown. Polar interactions are shown as dashed gray lines. Sequence logos (Schneider and Stephens, 1990) from alignments of  $\alpha$ - and  $\beta$ -CoV clades for the interacting regions are shown. The residues involved in protein:protein interactions are labeled under the logos. Dots above the logos denote conserved interacting residues.

(A) View of the tripartite nsp13.1-ZBD:nsp8b extension:nsp12 thumb interaction. The adventitiously bound CHAPSO molecule is shown in dark gray.

(B) View of the nsp13.2-ZBD:nsp8a extension interaction.

See also Figure S6 and Data S1 and S2.

studies reveal that AMP-PNP binds in the SeIO active site but is flipped relative to the orientation of ATP in canonical kinases. Functional studies show that SeIO pseudokinases are, in fact, active enzymes that transfer AMP, rather than a phosphate group, to S, T, and Y residues of protein substrates (AMPylation or adenylation; Sreelatha et al., 2018). These studies identified key SeIO residues involved in catalysis, including K113 and R176 (coordinate ATP  $\gamma$ -phosphate), E136 (stabilizes the position of K113), N253 and D262 (coordinate active-site  $Mg^{2+}$ ), and D252 (acts as a catalytic base).

A search using our complete NiRAN domain structure (nsp12 residues 1–250) on the DALI webserver (Holm and Laakso, 2016) revealed *P. syringae* SeIO as the most significant hit (PDB: 6EAC; Z score of 10.7; Sreelatha et al., 2018), as suggested by Kirchoerfer and Ward (2019). Extensive sequence analysis identified three conserved sequence motifs within the nidovirus-specific N-terminal domain:  $A_N$ ,  $B_N$ , and  $C_N$  (Lehmann et al., 2015a; Figure 4A). Overall sequence conservation between SeIO and the NiRAN domain is essentially non-existent (<10%), but a structure-based alignment reveals that the key SeIO catalytic residues are universally conserved within the NiRAN domain sequence motifs (Figure 4A) and conserved in spatial organization within the aligned active-site pocket (Figure 4B; Data S3).

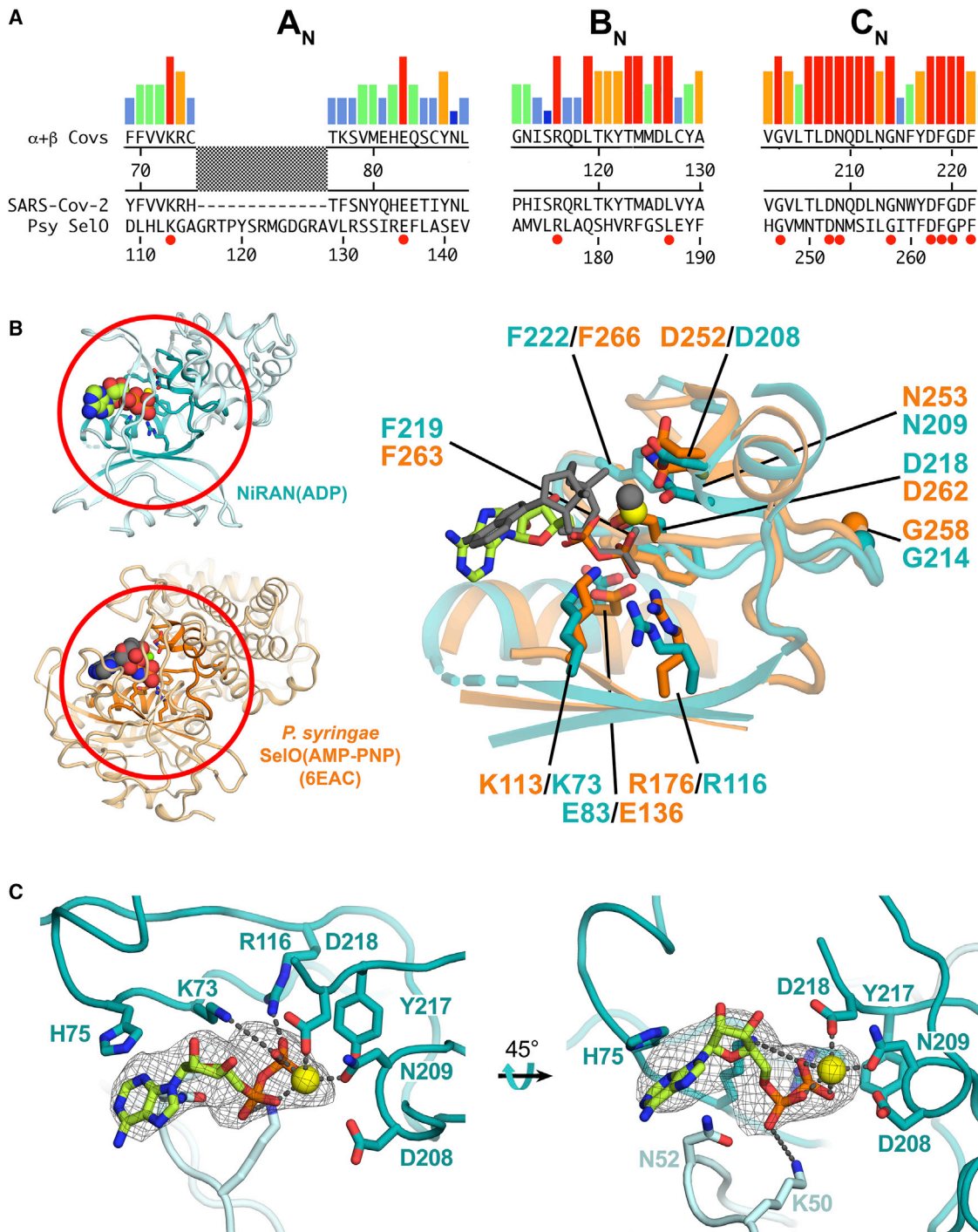
The NiRAN domain in the nsp13-RTC structure is occupied by ADP- $Mg^{2+}$ , which is well resolved (Figure 4C). Remarkably, the  $\alpha$ - and  $\beta$ -phosphates of the NiRAN domain ADP coincide almost exactly with the  $\beta$ - and  $\gamma$ -phosphates of AMP-PNP occupying

the SeIO active site (Figure 4B; root-mean-square deviation [RMSD] = 0.33 Å). All of the conserved active-site residues make interactions with ADP- $Mg^{2+}$ , as expected from the SeIO structure, except NiRAN domain K73 and R116 interact with ADP  $\beta$ -phosphate, whereas the corresponding K113 and R176 of SeIO interact with the similarly positioned AMP-PNP  $\gamma$ -phosphate.

### Roles of SARS-CoV-2 nsp13 in RTC Processivity and Backtracking

The overall architecture of the nsp13-RTC places the nucleic acid binding channel of nsp13.1 (Deng et al., 2014) directly in the path of the downstream tRNA. Indeed, a cryo-EM difference map, low-pass-filtered to 6-Å resolution, reveals the 5' single-stranded overhang of the tRNA (Figure 1A) engaged between the RecA domains and domain 1B of nsp13.1 before entering the RdRp active site (Figure 2C; Figure S6C).

Nsp13 is an SF1B helicase, which translocate on single-stranded nucleic acid in the 5' > 3' direction (Saikrishnan et al., 2009). *In vitro* studies confirm this direction of translocation for nidovirus helicases (Adedeji et al., 2012; Bautista et al., 2002; Ivanov and Ziebuhr, 2004; Seybert et al., 2000a, 2000b; Tanner et al., 2003). Unless the interaction of nsp13 with the holo-RdRp alters the unwinding polarity, which seems unlikely, the structural arrangement observed in the nsp13-RTC (Figure 2D) presents a conundrum. In the observed arrangement, the RdRp would translocate in the 3' > 5' direction on the tRNA

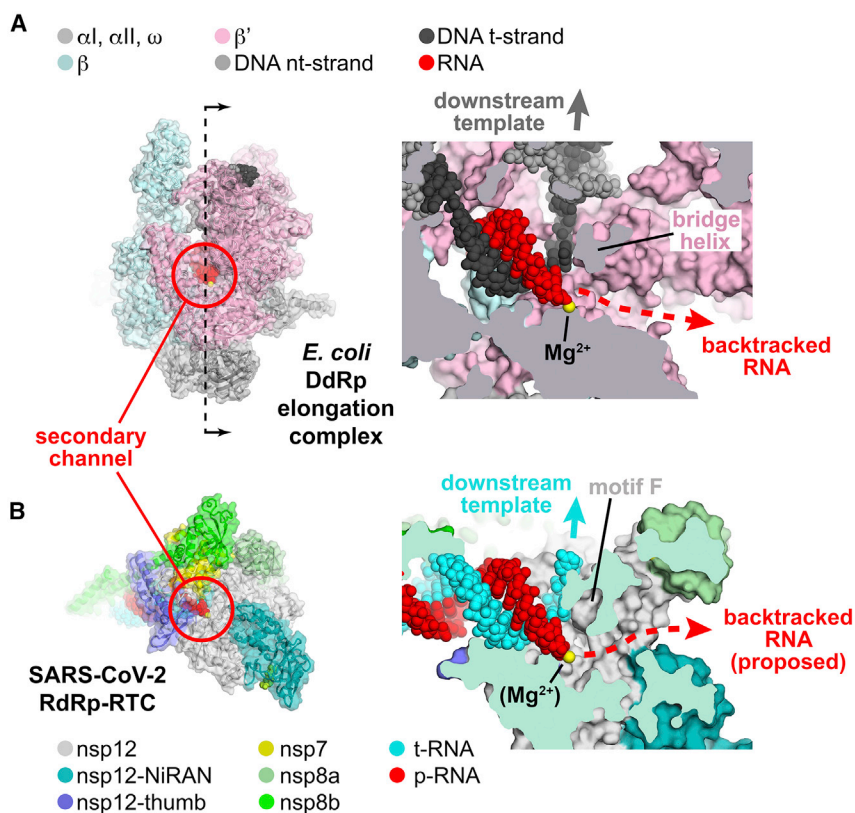


**Figure 4. The SARS-CoV-2 nsp12-NiRAN Domain, Pseudokinase SeI0, and ADP Binding**

(A) The colored histograms denote identity in a sequence alignment of 45  $\alpha$ - and  $\beta$ -CoV nsp12 sequences (red bar, 100% identity; dark blue bar, 20% or less) in the N-terminal signature motifs A<sub>N</sub>, B<sub>N</sub>, and C<sub>N</sub> (Lehmann et al., 2015a) of the NiRAN domain. The consensus sequence is shown below. The SARS-CoV-2 nsp12 and the pseudokinase *P. syringae* (Psy) SeI0 (Sreelatha et al., 2018) are aligned below. Residues that are 100% identical in the nsp12 alignment and conserved in SeI0 are highlighted by a red dot underneath.

(B) Left: structures of the SARS-CoV-2 NiRAN domain (cyan ribbon) with ADP-Mg<sup>2+</sup> (spheres) and Psy SeI0 (orange) with AMP-PNP-Mg<sup>2+</sup> (PDB: 6EAC; Sreelatha et al., 2018). The A<sub>N</sub>, B<sub>N</sub>, and C<sub>N</sub> regions are highlighted. Right: structure-based alignment via  $\alpha$ -carbons of the A<sub>N</sub>, B<sub>N</sub>, and C<sub>N</sub> regions, with side chains of conserved residues shown. The  $\alpha$ - and  $\beta$ -phosphates of the NiRAN domain ADP-Mg<sup>2+</sup> (lime carbon atoms and yellow sphere, respectively) superimpose almost exactly with the  $\beta$ - and  $\gamma$ -phosphates of the SeI0 AMP-PNP-Mg<sup>2+</sup> (dark gray), whereas the nucleoside moieties diverge.

(legend continued on next page)



**Figure 5. Correspondence of Structural Determinants for Backtracking between Cellular Multi-subunit DdRp and SARS-CoV-2 RdRp**

(A and B) Left: overall views of complexes. Proteins are shown as cartoon ribbons with transparent molecular surfaces. Nucleic acids are shown as atomic spheres. Color coding is shown in the keys. Right: cross-sectional view of the active site region (at the 3' end of the RNA product).

(A) Left: structure of the *E. coli* DdRp transcription elongation complex (EC; Kang et al., 2017), viewed down the secondary channel. The DdRp active-site  $Mg^{2+}$ -ion is shown as a yellow sphere. The secondary channel is highlighted in the red circle. The thin dashed line illustrated the cut and viewing direction of the cross-section on the right. Right: cross-sectional view showing the RNA/DNA hybrid. The bridge helix (viewed end-on in the cross-section) is denoted. The bridge helix directs the downstream template duplex DNA to the top (dark gray arrow). Under the bridge helix, the secondary channel allows NTP substrates to diffuse into the active site (Westover et al., 2004; Zhang et al., 1999) and accommodates the single-strand RNA transcript 3' end in backtracked complexes (Abdelkareem et al., 2019; Cheung and Cramer, 2011; Wang et al., 2009).

(B) Left: view down the newly described secondary channel of the SARS-CoV-2 holo-RdRp. The secondary channel is highlighted in the red circle. Right: cross-sectional view showing the t-RNA/p-RNA hybrid. Motif F (viewed end-on in the cross-section) is denoted. Motif F directs the downstream t-RNA to the top (cyan arrow). Underneath motif F, the secondary channel could accommodate the single-strand p-RNA 3' end in the event of backtracking.

strand, whereas nsp13 would translocate on the same strand in the opposite direction. Thus, in the proposed scenario, translocation of nsp13 competes with translocation by the RdRp, and if the helicase prevails, then it might be expected to push the RdRp backward on the t-RNA. Reversible backward motion of multi-subunit cellular DNA-dependent RNA polymerases (DdRps), called backtracking, is a well-characterized feature of these enzymes (Komissarova and Kashlev, 1997b, 1997a; Nudler, 2012; Nudler et al., 1997; Wang et al., 2009).

The large active-site cleft of the cellular DdRp is divided into two sections by a conserved structural element called the bridge helix (Figure 5A provides a cross-section view on the right). The main cleft on top of the bridge helix accommodates the downstream duplex DNA, whereas a pore or channel underneath the bridge helix forms a conduit from solution directly into the active site (Figure 5A, called the secondary channel in bacterial DdRp; Zhang et al., 1999). During normal transcription elongation, the NTP substrates enter the active site through the secondary

channel (Westover et al., 2004; Zhang et al., 1999). In backtracking, the DdRp and associated transcription bubble move backward on the DNA, whereas the RNA transcript reverse-threads through the complex to maintain the register of the RNA/DNA hybrid. These movements generate a downstream segment of single-stranded RNA at the 3' end that is extruded out the secondary channel (Figure 5A; Abdelkareem et al., 2019; Wang et al., 2009).

Although evolutionarily unrelated to the DdRp, the SARS-CoV-2 RdRp active site has a similar general architecture (Figure 5B). In place of the bridge helix, the viral RdRp has conserved motif F (SARS-CoV-2 nsp12 residues 544–555; Bruenn, 2003), which comprises a  $\beta$ -hairpin loop. Motif F directs the tRNA to the top, whereas underneath motif F is a channel that appears able to accommodate single-stranded nucleic acid. The analogous structural arrangement leads us to propose that the SARS-CoV-2 RdRp may backtrack, generating a single-stranded RNA segment at the 3' end that would extrude out the RdRp secondary channel (Figure 5B).

(C) Two views of the ADP- $Mg^{2+}$ -bound pocket of the SARS-CoV-2 NiRAN domain. Side chains interacting with the ADP- $Mg^{2+}$  are shown (polar interactions are denoted by gray dashed lines). D208 likely makes a water-mediated interaction with  $Mg^{2+}$  (Sreelatha et al., 2018). The cryo-EM difference density for ADP- $Mg^{2+}$  is shown (light gray mesh).

See also Data S3.



## DISCUSSION

We have established that the critical SARS-CoV-2 replication-transcription components nsp13 and holo-RdRp form a stable complex (Figures 1B and 1C) and determined a nominal 3.5-Å-resolution cryo-EM reconstruction (Figure 2; Figure S4; Table S1; Video S1). In the structure, the primary interaction determinant of the helicase with the RTC occurs between the nsp13-ZBDs and the nsp8 extensions. These structural elements are unique to nidoviruses, and the interaction interfaces are conserved within  $\alpha$ - and  $\beta$ -CoV genera (Figure 3), indicating that this interaction is a crucial facet of SARS-CoV-2 replication-transcription. A protein-protein interaction analysis of the SARS-CoV-1 ORFeome (which recapitulates the nsp13-RTC interactions observed in our structure) identified nsp8 as a central hub for viral protein-protein interactions (von Brunn et al., 2007). The structural architecture of nsp8a and nsp8b, with their long N-terminal helical extensions, provide a large binding surface for association of an array of replication-transcription factors (Figures 2C and 2E).

Our structure reveals ADP-Mg<sup>2+</sup> occupying the NiRAN domain active site (Figure 4C), presumably because the sample was incubated with ADP-AIF<sub>3</sub> prior to grid preparation. The ADP makes no base-specific interactions with the protein; nsp12-NiRAN-H75 forms a cation- $\pi$  interaction with the adenine base (Figure 4C), but this interaction is not expected to be strongly base specific, and structural modeling does not suggest obvious candidates for base-specific interactions. The position corresponding to H75 in the NiRAN domain A<sub>n</sub> alignment is not conserved (Figure 4A), suggesting that (1) this residue is not a determinant of base specificity for the NiRAN domain active site, (2) the NiRAN domain base specificity varies among different nidoviruses, or (3) NiRAN domains in general do not show base specificity in their activity. The NiRAN domain of the EAV-RdRp appeared to prefer U or G for its activity (Lehmann et al., 2015a). NiRAN domain enzymatic activity is essential for viral propagation, but its target is unknown (Lehmann et al., 2015a). Further experiments will be required to more completely understand NiRAN domain activity, its preferred substrate, and its *in vivo* targets, and these may vary among different nidoviruses. Our results provide a structural basis for (1) biochemical, biophysical, and genetic experiments to investigate these questions and (2) a platform for anti-viral therapy development.

Our analysis comparing the viral RdRp with cellular DdRps revealed a remarkable structural similarity at the polymerase active sites; immediately downstream of each polymerase active site is a conserved structural element that divides the active site cleft into two compartments, directing the downstream nucleic acid template into one compartment and leaving a relatively open channel (the secondary channel) in the other compartment (Figure 5). In the cellular DdRps, the conserved structural element that divides the active site cleft is the bridge helix (Lane and Darst, 2010), and the secondary channel serves to allow NTP substrates to access the DdRp active site and to also accommodate the single-stranded 3'-RNA fragment generated during backtracking (Figure 5A).

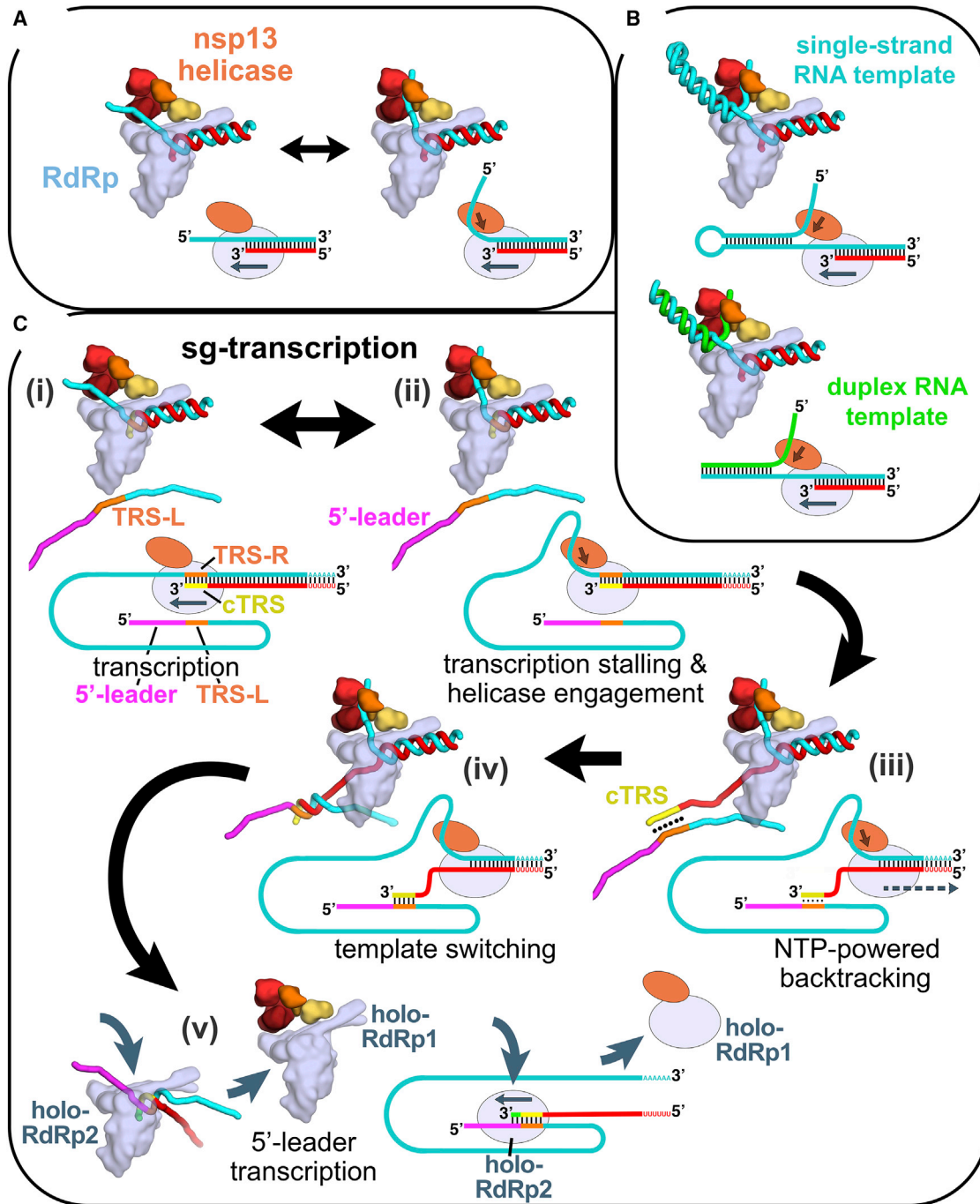
In the viral RdRp, the downstream strand-separating structural element is the motif F  $\beta$ -hairpin loop. As for multi-subunit DdRps,

the RdRp secondary channel is perfectly positioned to accommodate backtracked RNA (Figure 5B). Based on this structural analogy, we propose that the viral RdRp may undergo backtracking and that the single-stranded 3'-RNA fragment so generated would extrude out the viral RdRp secondary channel (Figure 5B). Backtracking of  $\Phi$ 6 and poliovirus RdRps has been observed experimentally (Dulin et al., 2015, 2017).

Ignoring sequence variation, the energetics of backtracking by cellular DdRps are close to neutral because the size of the melted transcription bubble and the length of the RNA/DNA hybrid in the active site cleft are maintained (any base pairs disrupted by backtracking are recovered somewhere else). For the SARS-CoV-2 RdRp, the arrangement of single-stranded and duplex nucleic acids during replication-transcription *in vivo* is not known, but *in vitro*, the RdRp synthesizes product RNA (p-RNA) from a single-stranded t-RNA, resulting in a persistent upstream p-RNA/t-RNA hybrid. In this case, backtracking is energetically disfavored because it only shortens the product RNA duplex without recovering duplex nucleic acids somewhere else. However, our structural analysis of the nsp13-RTC indicates that nsp13.1 can engage with the downstream single-stranded t-RNA (Figure 2D; Figure S6C). Translocation of the helicase on this RNA strand would proceed in the 5' > 3' direction, in opposition to the 3' > 5' translocation of the RdRp on the same RNA strand. This aspect of helicase function could provide the NTP-dependent motor activity necessary to backtrack the RdRp. In cellular organisms, DdRp backtracking plays important roles in many processes, including control of pausing during transcription elongation, termination, DNA repair, and fidelity (Nudler, 2012). Two potential roles of backtracking in SARS-CoV-2 replication-transcription include (1) fidelity and (2) template switching during sub-genomic transcription.

Backtracking by cellular DdRps is favored when base-pairing in the RNA/DNA hybrid is weakened by a misincorporated nucleotide in the RNA transcript (Nudler et al., 1997). Bacterial Gre factors or eukaryotic SII (transcription factor IIS, or TFIIIS) interact with the backtracked DdRp complex and stimulate endonucleolytic cleavage of the single-stranded 3'-RNA fragment, removing the misincorporated nucleotide and generating a new 3'-OH at the DdRp active site for transcription to resume (Borukhov et al., 1993; Fish and Kane, 2002; Kettenberger et al., 2003; Opalka et al., 2003). In this way, endonucleolytic transcript cleavage factors contribute to transcription fidelity *in vivo* (Erie et al., 1993; Thomas et al., 1998).

The replication and maintenance of the genomes of the large nidovirus RNA genome (Nga et al., 2011; Saberi et al., 2018) are hallmarks of nidoviruses. These viruses encode a unique set of proofreading activities that are not found in other RNA viruses (Minskaia et al., 2006). This includes the N-terminal exonuclease (ExoN) domain of nsp14, which, together with its co-factor nsp10, forms important RNA proofreading machinery during viral replication (Denison et al., 2011; Smith et al., 2014). The ExoN is conserved in nidoviruses with genome sizes of more than 20 kb (Gorbalenya et al., 2006; Minskaia et al., 2006; Nga et al., 2011; Zirkel et al., 2011), and mutations in the ExoN lead to viruses with a lethal mutator phenotype (Eckerle et al., 2007, 2010; Smith et al., 2013). *In vitro*, nsp14 3' > 5' ExoN activity can efficiently cleave a mismatched 3' end from



**Figure 6. Structural Basis for Possible nsp13 Helicase Functions during Viral Genome Replication-Transcription**

Structural models are shown as cartoons (holo-RdRp, light blue; nsp13.1 helicase, orange shades; RNA strands, colored tubes). The nsp13.2 helicase is not shown for clarity (all models are compatible with the presence of nsp13.2). With each structural diagram is a schematic cartoon illustrating the arrangement of RNA strands. Additional proteins involved in these processes are omitted. The product RNA (p-RNA) being elongated by the RdRp is shown in red.

(A) The SARS-CoV-2 nsp13-RdRp cryo-EM structure likely represents an equilibrium between two states.

(B) During RNA synthesis on a single-stranded RNA template (cyan), nsp13 could function distributively to clear downstream RNA secondary structure (or RNA binding proteins). Similarly, on a duplex RNA template (cyan and green), nsp13 could processively unwind downstream duplex RNA.

(C) Proposed helicase function during template switching associated with sub-genomic transcription (sg-transcription) (Enjuanes et al., 2006; Lehmann et al., 2015b; Pasternak et al., 2001; Snijder et al., 2016; Sola et al., 2015). (i) Negative-strand RNA synthesis proceeds from the genomic 3' poly(A)-tail until a transcription-regulating sequence (TRS-R, orange) (Alonso et al., 2002) is transcribed (cTRS, yellow). (ii) The TRS causes transcription complex stalling. (iii) Helicase

(legend continued on next page)

an RNA construct thought to mimic an RdRp misincorporation product (Bouvet et al., 2012). The nsp10/nsp14 proofreading machinery is thought to interact with the RTC complex (Subissi et al., 2014), but structural modeling shows that the ExoN active site would not be able to access a mismatched 3' end in the RdRp active site, which is too narrow to accommodate the nsp10/nsp14-ExoN domain proofreading machinery, a nearly 50-kDa protein. We propose that nsp14 may bind to the holo-RdRp with its ExoN active site at the mouth of the RdRp secondary channel, where it would be encountered by the backtracked mismatched RNA 3' end. Helicase-powered backtracking could thus play a role in maintaining replication-transcription fidelity by extruding the mismatched RNA 3' end into the nsp14 ExoN active site for cleavage.

Roadblocks to forward translocation of the cellular DdRps can also induce backtracking (Nudler, 2012). Remdesivir (Rdv) is an adenosine nucleoside triphosphate analog that has been granted emergency use authorization by the US Food and Drug Administration (US Food and Drug Administration, 2020; Warren et al., 2016). Rdv is incorporated into the p-RNA by the RdRp and appears to act by a delayed chain termination mechanism; up to three nucleotides can be added following Rdv incorporation until further forward translocation is stalled (Gordon et al., 2020). Rdv incorporated into the  $-4$  position of the RNA duplex would not be accessible by nsp14 ExoN activity, but CoV mutants lacking nsp14 ExoN activity are more sensitive to Rdv (Agostini et al., 2018), indicating that nsp14 ExoN activity can blunt the effectiveness of the drug (Shannon et al., 2020). The nsp14 ExoN proofreading activity to excise Rdv could be facilitated by backtracking, which would allow nsp14 to degrade the p-RNA from the 3' end until Rdv is removed.

The efficiency with which the holo-RdRp can negotiate downstream obstacles to elongation is unknown. Our structure suggests that the nsp13 helicase could act in the  $5' > 3'$  direction on the tRNA to disrupt stable RNA secondary structures or downstream RNA binding proteins (Figure 6B), both of which could be significant impediments to RNA elongation (Figure 6B). The helicase may function in this role distributively to avoid interfering with RdRp translocation. Alternatively, in the case of a fully duplex RNA template, the helicase could act processively to unwind the downstream duplex RNA, much like replicative helicases, such as DnaB in *Escherichia coli*, processively unwind the DNA duplex in front of the replicative DNA polymerase (Kaplan and O'Donnell, 2002).

Finally, CoV transcription includes a discontinuous step during production of sub-genomic RNAs (sg-transcription; Figure 6C) that involves a remarkable template-switching step unique to nidoviruses (Sawicki and Sawicki, 1998). The process produces sgRNAs that are 5'- and 3' co-terminal with the virus genome. In this process, transcription initiates from the 3' poly(A) tail of the + strand RNA genome (cyan RNA in Figure 6C(i)). Transcription proceeds until one of several transcription-regulating sequences (TRS-R; orange in Figure 6C) is encountered and transcribed

(transcribed cTRS in yellow), resulting in stalling of the RTC (Alonso et al., 2002), which could allow engagement of the helicase with the tRNA (Figure 6C(ii)). The complement to the TRS synthesized at the 3' end of the p-RNA (cTRS, yellow) is complementary to another TRS near the 5' leader of the genome (TRS-L, orange; 5' leader, magenta), and the template switching depends on complete base-pair complementarity between cTRS and TRS-L (Alonso et al., 2002; Pasternak et al., 2001; Zúñiga et al., 2004). Thus, the 6-nt core sequence of cTRS must be available to base-pair with TRS-L (Figure 6D(iv)), which could be made possible by helicase-induced backtracking of the RTC to extrude the cTRL at the p-RNA 3' end (Figure 6D(iii)). Upon backtracking, the exposed cTRS could form Watson-Crick base pairs with the complementary TRS-L (Figure 6D(iv)). Following hybridization of cTRS with TRS-L, a second holo-RdRp complex (holo-RdRp2) could load onto the free 3' end of cTRS at the  $\sim 6$ -bp RNA/RNA hybrid and continue transcription of the 5' leader (Figure 6D(v)), explaining how template switching may occur. The 6-bp hybrid between TRS-L and cTRS is exactly the length of the t-RNA/p-RNA duplex contacted by the nsp12 subunit of the holo-RdRp ( $-1$  to  $-7$ ; Figure 1A) and is probably what is required for a minimally stable holo-RdRp:RNA complex. Continued translocation of the helicase on the first RTC might processively backtrack the complex and unwind the p-RNA/t-RNA hybrid left in the wake of the RTC (Figure 6D(v)).

The various possible functional modes of nsp13 (illustrated in Figure 6) would not necessarily operate simultaneously but could be regulated by other components of the RTC (not shown in Figure 6). Thus, the role of nsp13 in facilitating RTC elongation on a single-stranded RNA template (Figure 6A, top), where nsp13 must function distributively, may involve the nsp13<sub>1</sub>-RTC (binding of other RTC components to the nsp8a extension could block binding of nsp13.2, for instance). Nsp13 could function processively to facilitate RTC elongation on a duplex RNA template (Figure 6B, bottom), and this could involve the nsp13<sub>2</sub>-RTC. The backtracking function of nsp13 in the context of sg-transcription (Figure 6C) could be facilitated by pausing, stalling, or inactivation of the RdRp at the TRS, which might be controlled by components of the protein complex presumed to be associated with TRS sequences (Enjuanes et al., 2006; Snijder et al., 2016; Sola et al., 2015).

In addition to nidoviruses, many RNA viruses, including important pathogens such as chikungunya virus, herpesvirus, hepatitis C, Zika virus, and picornaviruses, encode their own helicases (Lehmann et al., 2015b). Although these viral helicases belong to different helicase families and play different and complex roles in viral life cycles, they all have three things in common: (1) the helicases are essential for viral propagation, (2) very little is known about the precise mechanistic roles of the helicases in viral life cycles, and (3) the helicases are thought to function as components of larger macromolecular assemblies. Our structure provides important clues regarding the role of the nsp13-RTC in SARS-CoV-2 replication-transcription (Figure 6) and provides

function acting on the + strand RNA (cyan) causes backtracking of the transcription complex, freeing the pRNA 3' end. (iv) The p-RNA 3'-end cTRS (yellow) hybridizes with the complementary TRS-L (orange) following the genomic 5' leader sequence (magenta) (Alonso et al., 2002; Pasternak et al., 2001; Zúñiga et al., 2004). (v) Processive helicase function backtracks the RdRp complex and unwinds the p-RNA from the genomic 3' end. A second RdRp complex (holo-RdRp2) can load into the p-RNA 3' end and continue transcription using the 5' leader as a template.

guiding principles to test the roles of the essential helicases in other RNA viruses.

### Limitations of Study

The proposal that the holo-RdRp backtracks is based on structural analysis (Figure 5) and needs to be verified experimentally. Following from this, the implications of backtracking by the holo-RdRp in nsp10/nsp14-mediated proofreading and template switching during sg-transcription (Figure 6D(iii–v)) need to be further investigated *in vitro* (when possible) or *in vivo*. Finally, the proposed roles of nsp13 in facilitating holo-RdRp elongation through obstacles (Figure 6B) also need to be experimentally verified.

### STAR★METHODS

Detailed methods are provided in the online version of this paper and include the following:

- KEY RESOURCES TABLE
- RESOURCE AVAILABILITY
  - Lead Contact
  - Materials Availability
  - Data and Code Availability
- EXPERIMENTAL MODEL AND SUBJECT DETAILS
  - Proteins for structural biology and biochemistry
  - Protein expression
- METHOD DETAILS
  - Expression construct cloning
  - Protein expression and purification
  - Native electrophoretic mobility shift assays
  - Native mass spectrometry (nMS) analysis
  - *In vitro* Transcription Assays
  - Nsp13 Steady-state ATPase Activity Assays
  - Preparation of SARS-CoV-2 nsp13-RTC for Cryo-EM
  - Cryo-EM grid preparation
  - Cryo-EM data acquisition and processing
  - Model building and refinement
- QUANTIFICATION AND STATISTICAL ANALYSIS

### SUPPLEMENTAL INFORMATION

Supplemental Information can be found online at <https://doi.org/10.1016/j.cell.2020.07.033>.

### ACKNOWLEDGMENTS

We thank A. Aher, J. Berger, R. Landick, and C. Rice for helpful discussions and suggestions; L. Urnavicius (Laboratory of Cell Biology and Laboratory of Chemistry and Cell Biology); M. Ebrahim (The Rockefeller University Evelyn Gruss Lipper Cryo-electron Microscopy Resource Center) and H. Kuang (New York Structural Biology Center [NYSBC]) for help with cryo-EM data collection; T. Tuschl for support; and members of the Chait, Darst/Campbell, and Kapoor laboratories for helpful discussions. We thank B.R. tenOever for SARS-CoV-2 RNA. Some of the work reported here was conducted at the Simons Electron Microscopy Center (SEMC) and the National Resource for Automated Molecular Microscopy (NRAMM) and National Center for CryoEM Access and Training (NCCAT) located at the NYSBC, supported by grants from the NIH National Institute of General Medical Sciences (P41 GM103310), NYSTAR, the Simons Foundation (SF349247), the NIH Common Fund Transformative High Resolution Cryo-Electron Microscopy Program (U24

GM129539), and NY State Assembly Majority. This work was supported by the Pels Family Center for Biochemistry and Structural Biology (The Rockefeller University) and NIH grants P41 GM109824 and P41 GM103314 (to B.T.C.), R35 GM130234 (to T.K.), R35 GM118130 (to S.A.D.), and R01 GM114450 (to E.A.C.).

### AUTHOR CONTRIBUTIONS

Conceptualization, B.M., J.C., T.M.K., S.A.D., and E.A.C.; Cloning, Protein Purification, and Biochemistry, B.M., J.C., E.L., M.G., P.M.M.S., and H.V.; Mass Spectrometry, P.D.B.O.; Cryo-EM Specimen Preparation, B.M., E.L., and J.C.; Cryo-EM Data Collection and Processing, J.C., K.M., and E.T.E.; Model Building and Structural Analysis, S.A.D. and E.A.C.; Funding Acquisition and Supervision, B.T.C., T.M.K., S.A.D., and E.A.C.; Manuscript First Draft, S.A.D. and E.A.C. All authors contributed to finalizing the written manuscript.

### DECLARATION OF INTERESTS

The authors declare no competing interests.

Received: June 22, 2020

Revised: July 10, 2020

Accepted: July 22, 2020

Published: July 28, 2020

### REFERENCES

- Abdelkareem, M., Saint-André, C., Takacs, M., Papai, G., Crucifix, C., Guo, X., Ortiz, J., and Weixlbaumer, A. (2019). Structural Basis of Transcription: RNA Polymerase Backtracking and Its Reactivation. *Mol. Cell* 75, 298–309.e4.
- Adams, P.D., Afonine, P.V., Bunkóczi, G., Chen, V.B., Davis, I.W., Echols, N., Headd, J.J., Hung, L.-W., Kapral, G.J., Grosse-Kunstleve, R.W., et al. (2010). PHENIX: a comprehensive Python-based system for macromolecular structure solution. *Acta Crystallogr. D Biol. Crystallogr.* 66, 213–221.
- Adedeji, A.O., Marchand, B., Te Velthuis, A.J.W., Snijder, E.J., Weiss, S., Eoff, R.L., Singh, K., and Sarafianos, S.G. (2012). Mechanism of nucleic acid unwinding by SARS-CoV helicase. *PLoS ONE* 7, e36521.
- Afonine, P.V., Klaholz, B.P., Moriarty, N.W., Poon, B.K., Sobolev, O.V., Terwilliger, T.C., Adams, P.D., and Urzhumtsev, A. (2018). New tools for the analysis and validation of cryo-EM maps and atomic models. *Acta Crystallogr. D Struct. Biol.* 74, 814–840.
- Agostini, M.L., Andres, E.L., Sims, A.C., Graham, R.L., Sheahan, T.P., Lu, X., Smith, E.C., Case, J.B., Feng, J.Y., Jordan, R., et al. (2018). Coronavirus Susceptibility to the Antiviral Remdesivir (GS-5734) Is Mediated by the Viral Polymerase and the Proofreading Exoribonuclease. *MBio* 9, e00221–e18.
- Alonso, S., Izeta, A., Sola, I., and Enjuanes, L. (2002). Transcription regulatory sequences and mRNA expression levels in the coronavirus transmissible gastroenteritis virus. *J. Virol.* 76, 1293–1308.
- Bautista, E.M., Faaberg, K.S., Mickelson, D., and McGruder, E.D. (2002). Functional properties of the predicted helicase of porcine reproductive and respiratory syndrome virus. *Virology* 298, 258–270.
- Blanco-Melo, D., Nilsson-Payant, B.E., Liu, W.-C., Uhl, S., Hoagland, D., Moller, R., Jordan, T.X., Oishi, K., Panis, M., Sachs, D., et al. (2020). Imbalanced Host Response to SARS-CoV-2 Drives Development of COVID-19. *Cell* 181, 1036–1045.e9.
- Borukhov, S., Sagitov, V., and Goldfarb, A. (1993). Transcript cleavage factors from *E. coli*. *Cell* 72, 459–466.
- Bouhaddou, M., Memon, D., Meyer, B., White, K.M., Rezelj, V.V., Marrero, M.C., Polacco, B.J., Melnyk, J.E., Ulferts, S., Kaake, R.M., et al. (2020). The global phosphorylation landscape of SARS-CoV-2 infection. *Cell*. Published online June 28, 2020. <https://doi.org/10.1016/j.cell.2020.06.034>.
- Bouvet, M., Imbert, I., Subissi, L., Gluais, L., Canard, B., and Decroly, E. (2012). RNA 3'-end mismatch excision by the severe acute respiratory syndrome coronavirus nonstructural protein nsp10/nsp14 exoribonuclease complex. *Proc. Natl. Acad. Sci. USA* 109, 9372–9377.

- Bruenn, J.A. (2003). A structural and primary sequence comparison of the viral RNA-dependent RNA polymerases. *Nucleic Acids Res.* *31*, 1821–1829.
- Cardone, G., Heymann, J.B., and Steven, A.C. (2013). One number does not fit all: mapping local variations in resolution in cryo-EM reconstructions. *J. Struct. Biol.* *184*, 226–236.
- Chabre, M. (1990). Aluminofluoride and beryllofluoride complexes: a new phosphate analogs in enzymology. *Trends Biochem. Sci.* *15*, 6–10.
- Chen, V.B., Arendall, W.B., 3rd, Headd, J.J., Keedy, D.A., Immormino, R.M., Kapral, G.J., Murray, L.W., Richardson, J.S., and Richardson, D.C. (2010). MolProbity: all-atom structure validation for macromolecular crystallography. *Acta Crystallogr. D Biol. Crystallogr.* *66*, 12–21.
- Chen, J., Noble, A.J., Kang, J.Y., and Darst, S.A. (2019). Eliminating effects of particle adsorption to the air/water interface in single-particle cryo-electron microscopy: Bacterial RNA polymerase and CHAPSO. *J. Struct. Biol. X* *1*, 100005.
- Cheung, A.C.M., and Cramer, P. (2011). Structural basis of RNA polymerase II backtracking, arrest and reactivation. *Nature* *471*, 249–253.
- Cupido, T., Pisa, R., Kelley, M.E., and Kapoor, T.M. (2019). Designing a chemical inhibitor for the AAA protein spastin using active site mutations. *Nat. Chem. Biol.* *15*, 444–452.
- de Groot, R.J., Baker, S.C., Baric, R., Enjuanes, L., Gorbalenya, A.E., Holmes, K.V., Perlman, S., Poon, L., Rottier, P.J.M., Talbot, P.J., et al. (2012). Virus Taxonomy. In *Family Coronaviridae*, A.M.Q. King, M.J. Adams, E.B. Carstens, and E.J. Lefkowitz, eds. (Elsevier), pp. 806–828.
- D.E. Shaw Research (2020). Molecular dynamics simulation related to SARS-CoV-2. [https://www.deshawresearch.com/resources\\_sarscov2.html](https://www.deshawresearch.com/resources_sarscov2.html).
- Deng, Z., Lehmann, K.C., Li, X., Feng, C., Wang, G., Zhang, Q., Qi, X., Yu, L., Zhang, X., Feng, W., et al. (2014). Structural basis for the regulatory function of a complex zinc-binding domain in a replicative arterivirus helicase resembling a nonsense-mediated mRNA decay helicase. *Nucleic Acids Res.* *42*, 3464–3477.
- Denison, M.R., Graham, R.L., Donaldson, E.F., Eckerle, L.D., and Baric, R.S. (2011). Coronaviruses: an RNA proofreading machine regulates replication fidelity and diversity. *RNA Biol.* *8*, 270–279.
- Dudkiewicz, M., Szczepińska, T., Grynberg, M., and Pawłowski, K. (2012). A novel protein kinase-like domain in a selenoprotein, widespread in the tree of life. *PLoS ONE* *7*, e32138.
- Dulin, D., Vilfan, I.D., Berghuis, B.A., Poranen, M.M., Depken, M., and Dekker, N.H. (2015). Backtracking behavior in viral RNA-dependent RNA polymerase provides the basis for a second initiation site. *Nucleic Acids Res.* *43*, 10421–10429.
- Dulin, D., Arnold, J.J., van Laar, T., Oh, H.-S., Lee, C., Perkins, A.L., Harki, D.A., Depken, M., Cameron, C.E., and Dekker, N.H. (2017). Signatures of Nucleotide Analog Incorporation by an RNA-Dependent RNA Polymerase Revealed Using High-Throughput Magnetic Tweezers. *Cell Rep.* *21*, 1063–1076.
- Eckerle, L.D., Lu, X., Sperry, S.M., Choi, L., and Denison, M.R. (2007). High fidelity of murine hepatitis virus replication is decreased in nsp14 exoribonuclease mutants. *J. Virol.* *81*, 12135–12144.
- Eckerle, L.D., Becker, M.M., Halpin, R.A., Li, K., Venter, E., Lu, X., Scherbakova, S., Graham, R.L., Baric, R.S., Stockwell, T.B., et al. (2010). Infidelity of SARS-CoV Nsp14-exonuclease mutant virus replication is revealed by complete genome sequencing. *PLoS Pathog.* *6*, e1000896.
- Emsley, P., and Cowtan, K. (2004). Coot: model-building tools for molecular graphics. *Acta Crystallogr. D Biol. Crystallogr.* *60*, 2126–2132.
- Enjuanes, L., Almazán, F., Sola, I., and Zuñiga, S. (2006). Biochemical aspects of coronavirus replication and virus-host interaction. *Annu. Rev. Microbiol.* *60*, 211–230.
- Erie, D.A., Hajiseyedjavadi, O., Young, M.C., and von Hippel, P.H. (1993). Multiple RNA polymerase conformations and GreA: control of the fidelity of transcription. *Science* *262*, 867–873.
- Fish, R.N., and Kane, C.M. (2002). Promoting elongation with transcript cleavage stimulatory factors. *Biochim. Biophys. Acta* *1577*, 287–307.
- Gorbalenya, A.E., Enjuanes, L., Ziebuhr, J., and Snijder, E.J. (2006). Nidovirales: evolving the largest RNA virus genome. *Virus Res.* *117*, 17–37.
- Gordon, C.J., Tchesnokov, E.P., Woolner, E., Perry, J.K., Feng, J.Y., Porter, D.P., and Götte, M. (2020). Remdesivir is a direct-acting antiviral that inhibits RNA-dependent RNA polymerase from severe acute respiratory syndrome coronavirus 2 with high potency. *J. Biol. Chem.* *295*, 6785–6797.
- Hao, W., Wojdyla, J.A., Zhao, R., Han, R., Das, R., Zlatev, I., Manoharan, M., Wang, M., and Cui, S. (2017). Crystal structure of Middle East respiratory syndrome coronavirus helicase. *PLoS Pathog.* *13*, e1006474.
- Hilgenfeld, R., and Peiris, M. (2013). From SARS to MERS: 10 years of research on highly pathogenic human coronaviruses. *Antiviral Res.* *100*, 286–295.
- Hillen, H.S., Kokic, G., Farnung, L., Dienemann, C., Tegunov, D., and Cramer, P. (2020). Structure of replicating SARS-CoV-2 polymerase. *Nature*. Published online May 21, 2020. <https://doi.org/10.1038/s41586-020-2368-8>.
- Holm, L., and Laakso, L.M. (2016). Dali server update. *Nucleic Acids Res.* *44* (W1), W351–5.
- Ivanov, K.A., and Ziebuhr, J. (2004). Human coronavirus 229E nonstructural protein 13: characterization of duplex-unwinding, nucleoside triphosphatase, and RNA 5′-triphosphatase activities. *J. Virol.* *78*, 7833–7838.
- Ivanov, K.A., Thiel, V., Dobbe, J.C., van der Meer, Y., Snijder, E.J., and Ziebuhr, J. (2004). Multiple enzymatic activities associated with severe acute respiratory syndrome coronavirus helicase. *J. Virol.* *78*, 5619–5632.
- Jia, Z., Yan, L., Ren, Z., Wu, L., Wang, J., Guo, J., Zheng, L., Ming, Z., Zhang, L., Lou, Z., and Rao, Z. (2019). Delicate structural coordination of the Severe Acute Respiratory Syndrome coronavirus Nsp13 upon ATP hydrolysis. *Nucleic Acids Res.* *47*, 6538–6550.
- Kang, J.Y., Olinares, P.D.B., Chen, J., Campbell, E.A., Mustaev, A., Chait, B.T., Gottesman, M.E., and Darst, S.A. (2017). Structural basis of transcription arrest by coliphage HK022 Nun in an *Escherichia coli* RNA polymerase elongation complex. *eLife* *6*, e25478.
- Kaplan, D.L., and O'Donnell, M. (2002). DnaB drives DNA branch migration and dislodges proteins while encircling two DNA strands. *Mol. Cell* *10*, 647–657.
- Kettenberger, H., Armache, K.-J., and Cramer, P. (2003). Architecture of the RNA polymerase II-TFIIS complex and implications for mRNA cleavage. *Cell* *114*, 347–357.
- Kirchdoerfer, R.N., and Ward, A.B. (2019). Structure of the SARS-CoV nsp12 polymerase bound to nsp7 and nsp8 co-factors. *Nat. Commun.* *10*, 2342–2349.
- Komissarova, N., and Kashlev, M. (1997a). Transcriptional arrest: *Escherichia coli* RNA polymerase translocates backward, leaving the 3′ end of the RNA intact and extruded. *Proc. Natl. Acad. Sci. USA* *94*, 1755–1760.
- Komissarova, N., and Kashlev, M. (1997b). RNA polymerase switches between inactivated and activated states by translocating back and forth along the DNA and the RNA. *J. Biol. Chem.* *272*, 15329–15338.
- Lane, W.J., and Darst, S.A. (2010). Molecular evolution of multisubunit RNA polymerases: structural analysis. *J. Mol. Biol.* *395*, 686–704.
- Lee, N.-R., Kwon, H.-M., Park, K., Oh, S., Jeong, Y.-J., and Kim, D.-E. (2010). Cooperative translocation enhances the unwinding of duplex DNA by SARS coronavirus helicase nsP13. *Nucleic Acids Res.* *38*, 7626–7636.
- Lehmann, K.C., Gulyaeva, A., Zevenhoven-Dobbe, J.C., Janssen, G.M.C., Ruben, M., Overkleef, H.S., van Veelen, P.A., Samborskiy, D.V., Kravchenko, A.A., Leontovich, A.M., et al. (2015a). Discovery of an essential nucleotidylating activity associated with a newly delineated conserved domain in the RNA polymerase-containing protein of all nidoviruses. *Nucleic Acids Res.* *43*, 8416–8434.
- Lehmann, K.C., Snijder, E.J., Posthuma, C.C., and Gorbalenya, A.E. (2015b). What we know but do not understand about nidovirus helicases. *Virus Res.* *202*, 12–32.
- Madeira, F., Park, Y.M., Lee, J., Buso, N., Gur, T., Madhusoodanan, N., Basutkar, P., Tivey, A.R.N., Potter, S.C., Finn, R.D., and Lopez, R. (2019). The EMBL-EBI search and sequence analysis tools APIs in 2019. *Nucleic Acids Res.* *47* (W1), W636–W641.

- Marty, M.T., Baldwin, A.J., Marklund, E.G., Hochberg, G.K.A., Benesch, J.L.P., and Robinson, C.V. (2015). Bayesian deconvolution of mass and ion mobility spectra: from binary interactions to polydisperse ensembles. *Anal. Chem.* **87**, 4370–4376.
- Minskaia, E., Hertzog, T., Gorbalenya, A.E., Campanacci, V., Cambillau, C., Canard, B., and Ziebuhr, J. (2006). Discovery of an RNA virus 3'→5' exoribonuclease that is critically involved in coronavirus RNA synthesis. *Proc. Natl. Acad. Sci. USA* **103**, 5108–5113.
- Morin, A., Eisenbraun, B., Key, J., Sanschagrin, P.C., Timony, M.A., Ottaviano, M., and Sliz, P. (2013). Collaboration gets the most out of software. *eLife* **2**, e01456.
- Nga, P.T., Parquet, M. del C., Lauber, C., Parida, M., Nabeshima, T., Yu, F., Thuy, N.T., Inoue, S., Ito, T., Okamoto, K., et al. (2011). Discovery of the first insect nidovirus, a missing evolutionary link in the emergence of the largest RNA virus genomes. *PLoS Pathog.* **7**, e1002215.
- Nudler, E. (2012). RNA polymerase backtracking in gene regulation and genome instability. *Cell* **149**, 1438–1445.
- Nudler, E., Mustaev, A., Lukhtanov, E., and Goldfarb, A. (1997). The RNA-DNA hybrid maintains the register of transcription by preventing backtracking of RNA polymerase. *Cell* **89**, 33–41.
- Olinares, P.D.B., and Chait, B.T. (2019). Native Mass Spectrometry Analysis of Affinity-Captured Endogenous Yeast RNA Exosome Complexes. *Methods Mol. Biol.* **2062**, 357–382.
- Opalka, N., Chlenov, M., Chacon, P., Rice, W.J., Wriggers, W., and Darst, S.A. (2003). Structure and function of the transcription elongation factor GreB bound to bacterial RNA polymerase. *Cell* **114**, 335–345.
- Pasternak, A.O., van den Born, E., Spaan, W.J.M., and Snijder, E.J. (2001). Sequence requirements for RNA strand transfer during nidovirus discontinuous subgenomic RNA synthesis. *EMBO J.* **20**, 7220–7228.
- Pettersen, E.F., Goddard, T.D., Huang, C.C., Couch, G.S., Greenblatt, D.M., Meng, E.C., and Ferrin, T.E. (2004). UCSF Chimera—a visualization system for exploratory research and analysis. *J. Comput. Chem.* **25**, 1605–1612.
- Pisa, R., Cupido, T., Steinman, J.B., Jones, N.H., and Kapoor, T.M. (2019). Analyzing resistance to design selective chemical inhibitors for AAA proteins. *Cell Chem. Biol.* **26**, 1263–1273.e5.
- Punjani, A., Rubinstein, J.L., Fleet, D.J., and Brubaker, M.A. (2017). cryo-SPARC: algorithms for rapid unsupervised cryo-EM structure determination. *Nat. Methods* **14**, 290–296.
- Reid, D.J., Diesing, J.M., Miller, M.A., Perry, S.M., Wales, J.A., Montfort, W.R., and Marty, M.T. (2019). MetaUniDec: High-Throughput Deconvolution of Native Mass Spectra. *J. Am. Soc. Mass Spectrom.* **30**, 118–127.
- Saberi, A., Gulyaeva, A.A., Brubacher, J.L., Newmark, P.A., and Gorbalenya, A.E. (2018). A planarian nidovirus expands the limits of RNA genome size. *PLoS Pathog.* **14**, e1007314.
- Saikrishnan, K., Powell, B., Cook, N.J., Webb, M.R., and Wigley, D.B. (2009). Mechanistic basis of 5'-3' translocation in SF1B helicases. *Cell* **137**, 849–859.
- Sawicki, S.G., and Sawicki, D.L. (1998). A new model for coronavirus transcription. *Adv. Exp. Med. Biol.* **440**, 215–219.
- Scheres, S.H.W. (2012). RELION: implementation of a Bayesian approach to cryo-EM structure determination. *J. Struct. Biol.* **180**, 519–530.
- Schneider, T.D., and Stephens, R.M. (1990). Sequence logos: a new way to display consensus sequences. *Nucleic Acids Res.* **18**, 6097–6100.
- Seybert, A., van Dinten, L.C., Snijder, E.J., and Ziebuhr, J. (2000a). Biochemical characterization of the equine arteritis virus helicase suggests a close functional relationship between arterivirus and coronavirus helicases. *J. Virol.* **74**, 9586–9593.
- Seybert, A., Hegyi, A., Siddell, S.G., and Ziebuhr, J. (2000b). The human coronavirus 229E superfamily 1 helicase has RNA and DNA duplex-unwinding activities with 5'-to-3' polarity. *RNA* **6**, 1056–1068.
- Seybert, A., Posthuma, C.C., van Dinten, L.C., Snijder, E.J., Gorbalenya, A.E., and Ziebuhr, J. (2005). A complex zinc finger controls the enzymatic activities of nidovirus helicases. *J. Virol.* **79**, 696–704.
- Shannon, A., Le, N.T.T., Selisko, B., Eydoux, C., Alvarez, K., Guillemot, J.-C., Decroly, E., Peersen, O., Ferron, F., and Canard, B. (2020). Remdesivir and SARS-CoV-2: Structural requirements at both nsp12 RdRp and nsp14 Exonuclease active-sites. *Antiviral Res.* **178**, 104793.
- Singleton, M.R., Dillingham, M.S., and Wigley, D.B. (2007). Structure and mechanism of helicases and nucleic acid translocases. *Annu. Rev. Biochem.* **76**, 23–50.
- Smith, E.C., Blanc, H., Surdel, M.C., Vignuzzi, M., and Denison, M.R. (2013). Coronaviruses lacking exoribonuclease activity are susceptible to lethal mutagenesis: evidence for proofreading and potential therapeutics. *PLoS Pathog.* **9**, e1003565.
- Smith, E.C., Sexton, N.R., and Denison, M.R. (2014). Thinking Outside the Triangle: Replication Fidelity of the Largest RNA Viruses. *Annu. Rev. Virol.* **1**, 111–132.
- Snijder, E.J., Decroly, E., and Ziebuhr, J. (2016). The Nonstructural Proteins Directing Coronavirus RNA Synthesis and Processing. *Adv. Virus Res.* **96**, 59–126.
- Sola, I., Almazán, F., Zúñiga, S., and Enjuanes, L. (2015). Continuous and Discontinuous RNA Synthesis in Coronaviruses. *Annu. Rev. Virol.* **2**, 265–288.
- Sreelatha, A., Yee, S.S., Lopez, V.A., Park, B.C., Kinch, L.N., Pilch, S., Servage, K.A., Zhang, J., Jiou, J., Karasiewicz-Urbańska, M., et al. (2018). Protein AMPylation by an Evolutionarily Conserved Pseudokinase. *Cell* **175**, 809–821.e19.
- Subissi, L., Posthuma, C.C., Collet, A., Zevenhoven-Dobbe, J.C., Gorbalenya, A.E., Decroly, E., Snijder, E.J., Canard, B., and Imbert, I. (2014). One severe acute respiratory syndrome coronavirus protein complex integrates processive RNA polymerase and exonuclease activities. *Proc. Natl. Acad. Sci. USA* **111**, E3900–E3909.
- Suloway, C., Pulokas, J., Fellmann, D., Cheng, A., Guerra, F., Quispe, J., Stagg, S., Potter, C.S., and Carragher, B. (2005). Automated molecular microscopy: the new Legimon system. *J. Struct. Biol.* **151**, 41–60.
- Tan, Y.Z., Baldwin, P.R., Davis, J.H., Williamson, J.R., Potter, C.S., Carragher, B., and Lyumkyo, D. (2017). Addressing preferred specimen orientation in single-particle cryo-EM through tilting. *Nat. Methods* **14**, 793–796.
- Tanner, J.A., Watt, R.M., Chai, Y.-B., Lu, L.-Y., Lin, M.C., Peiris, J.S.M., Poon, L.L.M., Kung, H.-F., and Huang, J.-D. (2003). The severe acute respiratory syndrome (SARS) coronavirus NTPase/helicase belongs to a distinct class of 5' to 3' viral helicases. *J. Biol. Chem.* **278**, 39578–39582.
- Thomas, M.J., Platas, A.A., and Hawley, D.K. (1998). Transcriptional fidelity and proofreading by RNA polymerase II. *Cell* **93**, 627–637.
- Tvarogová, J., Madhugiri, R., Bylapudi, G., Ferguson, L.J., Karl, N., and Ziebuhr, J. (2019). Identification and Characterization of a Human Coronavirus 229E Nonstructural Protein 8-Associated RNA 3'-Terminal Adenylyltransferase Activity. *J. Virol.* **93**, e00291-19.
- US Food and Drug Administration (2020). Remdesivir EUA Letter of Authorization, Remdesivir-EUA-Letter-Of-Authorization.pdf.
- van Dinten, L.C., Wassenaar, A.L., Gorbalenya, A.E., Spaan, W.J., and Snijder, E.J. (1996). Processing of the equine arteritis virus replicase ORF1b protein: identification of cleavage products containing the putative viral polymerase and helicase domains. *J. Virol.* **70**, 6625–6633.
- van Dinten, L.C., van Tol, H., Gorbalenya, A.E., and Snijder, E.J. (2000). The predicted metal-binding region of the arterivirus helicase protein is involved in subgenomic mRNA synthesis, genome replication, and virion biogenesis. *J. Virol.* **74**, 5213–5223.
- van Marle, G., van Dinten, L.C., Spaan, W.J.M., Luytjes, W., and Snijder, E.J. (1999). Characterization of an equine arteritis virus replicase mutant defective in subgenomic mRNA synthesis. *J. Virol.* **73**, 5274–5281.
- von Brunn, A., Teepe, C., Simpson, J.C., Pepperkok, R., Friedel, C.C., Zimmer, R., Roberts, R., Baric, R., and Haas, J. (2007). Analysis of intraviral protein-protein interactions of the SARS coronavirus ORFome. *PLoS ONE* **2**, e459.
- Wang, D., Bushnell, D.A., Huang, X., Westover, K.D., Levitt, M., and Kornberg, R.D. (2009). Structural basis of transcription: backtracked RNA polymerase II at 3.4 angstrom resolution. *Science* **324**, 1203–1206.

Wang, Q., Wu, J., Wang, H., Gao, Y., Liu, Q., Mu, A., Ji, W., Yan, L., Zhu, Y., Zhu, C., et al. (2020). Structural Basis for RNA Replication by the SARS-CoV-2 Polymerase. *Cell* 368, 1499–1504.

Warren, T.K., Jordan, R., Lo, M.K., Ray, A.S., Mackman, R.L., Soloveva, V., Siegel, D., Perron, M., Bannister, R., Hui, H.C., et al. (2016). Therapeutic efficacy of the small molecule GS-5734 against Ebola virus in rhesus monkeys. *Nature* 537, 381–385.

Westover, K.D., Bushnell, D.A., and Kornberg, R.D. (2004). Structural basis of transcription: nucleotide selection by rotation in the RNA polymerase II active center. *Cell* 119, 481–489.

Wu, F., Zhao, S., Yu, B., Chen, Y.-M., Wang, W., Song, Z.-G., Hu, Y., Tao, Z.-W., Tian, J.-H., Pei, Y.-Y., et al. (2020). A new coronavirus associated with human respiratory disease in China. *Nature* 579, 265–269.

Xiao, Y., Ma, Q., Restle, T., Shang, W., Svergun, D.I., Ponnusamy, R., Sczakiel, G., and Hilgenfeld, R. (2012). Nonstructural proteins 7 and 8 of feline coronavirus form a 2:1 heterotrimer that exhibits primer-independent RNA polymerase activity. *J. Virol.* 86, 4444–4454.

Yin, W., Mao, C., Luan, X., Shen, D.-D., Shen, Q., Su, H., Wang, X., Zhou, F., Zhao, W., Gao, M., et al. (2020). Structural basis for inhibition of the RNA-dependent RNA polymerase from SARS-CoV-2 by remdesivir. *Science* 368, 1499–1504.

Zhai, Y., Sun, F., Li, X., Pang, H., Xu, X., Bartlam, M., and Rao, Z. (2005). Insights into SARS-CoV transcription and replication from the structure of the nsp7-nsp8 hexadecamer. *Nat. Struct. Mol. Biol.* 12, 980–986.

Zhang, G., Campbell, E.A., Minakhin, L., Richter, C., Severinov, K., and Darst, S.A. (1999). Crystal structure of *Thermus aquaticus* core RNA polymerase at 3.3 Å resolution. *Cell* 98, 811–824.

Zhang, R., Li, Y., Cowley, T.J., Steinbrenner, A.D., Phillips, J.M., Yount, B.L., Baric, R.S., and Weiss, S.R. (2015). The nsp1, nsp13, and M proteins contribute to the hepatotropism of murine coronavirus JHM.WU. *J. Virol.* 89, 3598–3609.

Zheng, S.Q., Palovcak, E., Armache, J.-P., Verba, K.A., Cheng, Y., and Agard, D.A. (2017). MotionCorr2: anisotropic correction of beam-induced motion for improved cryo-electron microscopy. *Nat. Methods* 14, 331–332.

Zhou, P., Yang, X.-L., Wang, X.-G., Hu, B., Zhang, L., Zhang, W., Si, H.-R., Zhu, Y., Li, B., Huang, C.-L., et al. (2020). A pneumonia outbreak associated with a new coronavirus of probable bat origin. *Nature* 579, 270–273.

Zirkel, F., Kurth, A., Quan, P.-L., Briese, T., Ellerbrok, H., Pauli, G., Leendertz, F.H., Lipkin, W.I., Ziebuhr, J., Drosten, C., and Junglen, S. (2011). An insect nidovirus emerging from a primary tropical rainforest. *MBio* 2, e00077–e11.

Zivanov, J., Nakane, T., Forsberg, B.O., Kimanius, D., Hagen, W.J., Lindahl, E., and Scheres, S.H.W. (2018). New tools for automated high-resolution cryo-EM structure determination in RELION-3. *eLife* 7, e42166.

Zúñiga, S., Sola, I., Alonso, S., and Enjuanes, L. (2004). Sequence motifs involved in the regulation of discontinuous coronavirus subgenomic RNA synthesis. *J. Virol.* 78, 980–994.

STAR★METHODS

KEY RESOURCES TABLE

REAGENT or RESOURCE	SOURCE	IDENTIFIER
<b>Bacterial and Virus Strains</b>		
<i>E. coli</i> BL21(DE3)	NEB	Cat.# C25271
<i>E. coli</i> BL21-CodonPlus	Agilent	Cat.# 230280
<i>E. coli</i> Rosetta (DE3)	Novagen	Cat.# 70954-3
SARS-CoV-2 infected Vero E6 cells	<a href="#">Blanco-Melo et al., 2020</a>	N/A
<b>Chemicals, Peptides, and Recombinant Proteins</b>		
3-[[3-Cholamidopropyl]dimethylammonio]-2-hydroxy-1-propanesulfonate	Anatrace	Cat.# C317
Adenosine 5'-diphosphate sodium salt	Sigma-Aldrich	Cat.# A2754-1G
Aluminum fluoride	Sigma-Aldrich	Cat.# 449628-10G
LDH/PK	Sigma-Aldrich	Cat.# P0294-5ML
NADH	Sigma-Aldrich	Cat.# N7410-15VL
PEP	Sigma-Aldrich	Cat.# P7127-250MG
SARS-CoV-2 nsp12 (biochemistry and cryo-EM)	This paper	N/A
SARS-CoV-2 nsp13 (biochemistry and cryo-EM)	This paper	N/A
SARS-CoV-2 nsp7/8 (biochemistry and cryo-EM)	This paper	N/A
SuperScript III Reverse Transcriptase	Invitrogen	Cat.# 18080051
<b>Critical Commercial Assays</b>		
Kinase-Glo Plus Assay Kit	Promega	Cat.# V3771
<b>Deposited Data</b>		
Coordinates of SARS-CoV-2 nsp13 <sub>2</sub> -RTC	This paper	PDB: 6XEZ
Cryo-EM map of SARS-CoV-2 (nsp13 <sub>2</sub> -RTC) <sub>2</sub>	This paper	EMD-22271
Cryo-EM map of SARS-CoV-2 nsp13 <sub>1</sub> -RTC	This paper	EMD-22270
Cryo-EM map of SARS-CoV-2 nsp13 <sub>2</sub> -RTC	This paper	EMD-22160
Repository of raw data	This paper	<a href="https://data.mendeley.com/datasets/njf7w7m5js/draft?a=8a8a4e75-3e95-41f5-9d90-6956c34b5aa3">https://data.mendeley.com/datasets/njf7w7m5js/draft?a=8a8a4e75-3e95-41f5-9d90-6956c34b5aa3</a>
<b>Oligonucleotides</b>		
The oligonucleotides used in this study are listed in <a href="#">Table S2</a> .	This paper	N/A
<b>Recombinant DNA</b>		
pCDFDuet-1	Novagen	Cat.# 71340-3
pCDFDuet-1-His <sub>6</sub> -SARS-CoV-2-nsp7_nsp8	This paper	N/A
pET28-His <sub>6</sub> -SARS-CoV-2-nsp13	GenScript	N/A
pRSFDuet-1	Novagen	Cat.# 71341-3
pRSFDuet-1-His <sub>6</sub> -SUMO-SARS-CoV-2-nsp12	This paper	N/A
<b>Software and Algorithms</b>		
bloccfilt	<a href="#">Cardone et al., 2013</a>	<a href="https://lsbr.niams.nih.gov/bsoft/programs/bloccfilt.html">https://lsbr.niams.nih.gov/bsoft/programs/bloccfilt.html</a>
blocres	<a href="#">Cardone et al., 2013</a>	<a href="https://lsbr.niams.nih.gov/bsoft/programs/blocres.html">https://lsbr.niams.nih.gov/bsoft/programs/blocres.html</a>
Coot	<a href="#">Emsley and Cowtan, 2004</a>	<a href="https://www2.mrc-lmb.cam.ac.uk/personal/pemsley/coot">https://www2.mrc-lmb.cam.ac.uk/personal/pemsley/coot</a>
cryoSPARC	<a href="#">Punjani et al., 2017</a>	<a href="https://cryosparc.com/">https://cryosparc.com/</a>
Dali server	<a href="#">Holm and Laakso, 2016</a>	<a href="http://ekhidna2.biocenter.helsinki.fi/dali/">http://ekhidna2.biocenter.helsinki.fi/dali/</a>
EMBL-EBI Clustal Omega	<a href="#">Madeira et. Al., 2019</a>	<a href="https://www.ebi.ac.uk/Tools/msa/clustalo/">https://www.ebi.ac.uk/Tools/msa/clustalo/</a>

(Continued on next page)



**Continued**

REAGENT or RESOURCE	SOURCE	IDENTIFIER
GraphPad Prism	GraphPad	<a href="http://www.graphpad.com/scientific-software/prism/">http://www.graphpad.com/scientific-software/prism/</a>
Leginon	Suloway et al., 2005	<a href="https://emg.nysbc.org/redmine/projects/legionon/wiki/Leginon_Homepage">https://emg.nysbc.org/redmine/projects/legionon/wiki/Leginon_Homepage</a>
Molprobit	Chen et al., 2010	<a href="http://molprobit.biochem.duke.edu">http://molprobit.biochem.duke.edu</a>
MotionCor2	Zheng et al., 2017	<a href="https://emcore.ucsf.edu/ucsf-software">https://emcore.ucsf.edu/ucsf-software</a>
mtriage	Afonine et al., 2018	<a href="https://www.phenix-online.org/documentation/reference/mtriage.html">https://www.phenix-online.org/documentation/reference/mtriage.html</a>
PHENIX	Adams et al., 2010	<a href="https://www.phenix-online.org/documentation/index.html">https://www.phenix-online.org/documentation/index.html</a>
RELION	Scheres, 2012	<a href="https://www2.mrc-lmb.cam.ac.uk/relion">https://www2.mrc-lmb.cam.ac.uk/relion</a>
RELION Bayesian Polishing	Zivanov et al., 2018	<a href="https://www2.mrc-lmb.cam.ac.uk/relion">https://www2.mrc-lmb.cam.ac.uk/relion</a>
SBGrid	Morin et al., 2013	<a href="https://sbgrid.org/">https://sbgrid.org/</a>
The PyMOL Molecular Graphics System	Schrödinger, LLC	<a href="https://pymol.org/2/">https://pymol.org/2/</a>
UCSF Chimera	Pettersen et al., 2004	<a href="https://www.cgl.ucsf.edu/chimera">https://www.cgl.ucsf.edu/chimera</a>
UniDec	Marty et al., 2015	<a href="https://github.com/michaelmarty/UniDec/releases">https://github.com/michaelmarty/UniDec/releases</a>
WebLogo	Schneider and Stephens, 1990	<a href="https://weblogo.berkeley.edu/">https://weblogo.berkeley.edu/</a>
Other		
C-flat CF-1.2/1.3 400 mesh gold grids	Protochips, Inc.	Cat.# CF413-100-Au
cOmplete Protease Inhibitor Cocktail	Roche	Cat.# 11697498001
Gibson Assembly Master Mix	NEB	Cat.# E2611S
HiLoad 16/600 Superdex 200 pg	GE Healthcare Life Sciences	Cat.# GE28-9893-3
HiLoad 16/600 Superdex 75 pg	GE Healthcare Life Sciences	Cat.# GE28-9893-33
HisTrap HP	GE Healthcare Life Sciences	Cat.# GE17-5248-02
HiTrap Heparin HP	GE Healthcare Life Sciences	Cat.# GE17-0407-03
Isotope [ $\alpha$ - <sup>32</sup> P] ATP	Perkin Elmer	Cat.# BLU003H250UC
Superose 6 Increase 10/300 GL column	GE Healthcare Life Sciences	Cat.# GE29-0915-96
Zeba Spin Desalting Columns, 40K MWCO	Thermo Scientific	Cat.# 87765
Zeba Spin Desalting Columns, 7K MWCO	Thermo Scientific	Cat.# 89882

**RESOURCE AVAILABILITY****Lead Contact**

Further information and requests for resources and reagents should be directed to and will be fulfilled by the Lead Contact, Seth A. Darst ([darst@rockefeller.edu](mailto:darst@rockefeller.edu)).

**Materials Availability**

Plasmids generated in this study will be made available on request by the Lead Contact.

**Data and Code Availability**

The cryo-EM density maps for the nsp13<sub>1</sub>-RTC(CHAPSO), nsp13<sub>2</sub>-RTC(CHAPSO), and (nsp13<sub>2</sub>-RTC)<sub>2</sub>(CHAPSO) have been deposited in the EMDataBank under accession codes EMD-22270, EMD-22160, and EMD-22271, respectively. Atomic coordinates for nsp13<sub>2</sub>-RTC have been deposited in the Protein Data Bank under accession code 6XEZ. Source data for gel-based images in the paper (Figure 1B; Figure S1C) are available ([https://data.mendeley.com/datasets/njf7w7m5js/draft?\\_a=8a8a4e75-3e95-41f5-9d90-6956c34b5aa3](https://data.mendeley.com/datasets/njf7w7m5js/draft?_a=8a8a4e75-3e95-41f5-9d90-6956c34b5aa3))

**EXPERIMENTAL MODEL AND SUBJECT DETAILS****Proteins for structural biology and biochemistry**

nsp7, nsp8, nsp12, and nsp13 are proteins from the SARS-CoV-2 virus.

### Protein expression

For nsp7/nsp8 expression, *Eco* BL21(DE3) [*Eco* str. B F<sup>-</sup> *ompT gal dcm lon hsdS<sub>B</sub>(r<sub>B</sub><sup>-</sup>m<sub>B</sub><sup>-</sup>) λ(DE3 [lacI lacUV5-T7p07 ind1 sam7 nin5]) [malB<sup>+</sup>]<sub>K-12</sub>(λ<sup>S</sup>)] were transformed and grown overnight on LB-agar plates containing 50 μg/mL streptomycin (Strep). Single colonies were used to inoculate LB/Strep media and grown overnight at 37°C. Two-liter flasks of LB/Strep were inoculated with 25 mL of overnight culture and ZnCl<sub>2</sub> (10 μM final). Cells were grown at 30°C, induced at 0.6 OD<sub>600</sub> by the addition of isopropyl β-d-1-thiogalactopyranoside (IPTG, 0.1 mM final), then incubated for 14 hr at 16°C.*

For nsp12 expression, *Eco* BL21-CodonPlus(DE3)-RP [*Eco* B F<sup>-</sup> *ompT hsdS<sub>B</sub>(r<sub>B</sub><sup>-</sup>m<sub>B</sub><sup>-</sup>) dcm+ Tet<sup>r</sup> gal λ(DE3) endA Hte [argU proL Cam<sup>r</sup>]] (Agilent) were transformed and grown overnight on LB-agar plates containing 50 μg/mL kanamycin (KAN) and 25 μg/mL chloramphenicol (CAM). Single colonies were used to inoculate LB/KAN/CAM media and grown overnight at 37°C. Two-liter flasks of LB/KAN/CAM were inoculated with 20 mL of overnight culture and ZnCl<sub>2</sub> (10 μM final). Cells were grown at 37°C, induced at 0.6 OD<sub>600</sub> by the addition of IPTG (0.1 mM final), then incubated for 16 hr at 16°C.*

For nsp13 expression, *Eco* Rosetta(DE3) [*Eco* F<sup>-</sup> *ompT hsdS<sub>B</sub>(r<sub>B</sub><sup>-</sup>m<sub>B</sub><sup>-</sup>) gal dcm (DE3) pRARE (Cam<sup>R</sup>)] (Novagen) were transformed and grown overnight on LB-agar plates containing 50 μg/mL KAN and 25 μg/mL CAM. Single colonies were used to inoculate LB/KAN/CAM media and grown overnight at 37°C. Two-liter flasks of LB/KAN/CAM were inoculated with 25 mL of overnight culture. Cells were grown at 37°C, induced at 0.7 OD<sub>600</sub> by the addition of IPTG (0.2 mM final), then incubated for 17 hr at 16°C.*

## METHOD DETAILS

### Expression construct cloning

The oligonucleotides used in this study are listed in Table S2. All constructs were verified by sequencing (GeneWiz).

#### Nsp7/8

The coding sequences of the *E. coli* codon-optimized SARS-CoV-2 nsp7 and nsp8 genes (gBlocks from Integrated DNA Technologies) were cloned into a pCDFDuet-1 vector (Novagen). Nsp7 bore an N-terminal His<sub>6</sub>-tag that was cleavable with PreScission protease (GE Healthcare Life Sciences).

#### Nsp12

SARS-CoV-2 RNA was derived from the supernatant of propagated Vero E6 cells and provided by B.R. tenOever (Blanco-Melo et al., 2020). The sequence encoding nsp12 was reverse transcribed into cDNA using gene-specific primers and SuperScript III Reverse Transcriptase (ThermoFisher). The ORF1a/1b programmed -1 ribosomal frameshift that naturally occurs during ORF1b translation was corrected to express the nsp12 open reading frame without frameshift using the following forward primer 5'-TCAGCTGATGCA CAATCGTTTTTAAACC<sup>CGGGTTT</sup>GCGGTGTAAG-3' (the correction is underlined). The SARS-CoV-2 nsp12 coding sequence was subsequently cloned into a modified pRSFDuet-1 vector (Novagen) bearing an N-terminal His<sub>6</sub>-SUMO-tag which is cleavable by the ubiquitin-like protease (ULP1).

#### Nsp13

The OptimumGene method was used to optimize the sequence full-length SARS-CoV-2 nsp13 helicase sequence for insect cell expression. The gene was synthesized and cloned into the pet28(a)+ vector, using NdeI and XhoI restriction sites, by Genescript. We then performed mutagenesis using the Quikchange mutagenesis kit (Agilent) to insert an HRV-3C (PreScission) protease cleavage site and remove the thrombin cleavage site.

### Protein expression and purification

#### Nsp12

The pRSFDuet-1 plasmid expressing His<sub>6</sub>-SUMO-nsp12 was transformed into *Eco* BL21-CodonPlus cells (Agilent) and grown overnight on LB-agar plates containing 50 μg/mL KAN and 25 μg/mL CAM. Single colonies were used to inoculate LB/KAN/CAM media and grown overnight at 37°C. Two-liter flasks of LB/KAN/CAM were inoculated with 20 mL of overnight culture and ZnCl<sub>2</sub> (10 μM final). Cells were grown at 37°C, induced at 0.6 OD<sub>600</sub> by the addition of IPTG (0.1 mM final), then incubated for 16 hr at 16°C. Cells were collected by centrifugation, resuspended in 20 mM Tris-HCl, pH 8.0, 0.1 mM ethylenediaminetetraacetic acid (EDTA)-NaOH, pH 8.0, 100 mM NaCl, 5% (v/v) glycerol, 1 mM dithiothreitol (DTT), 10 μM ZnCl<sub>2</sub>, 1x complete Protease Inhibitor Cocktail (PIC, Roche), 1 mM phenylmethylsulfonyl fluoride (PMSF), and lysed in a continuous-flow French press (Avestin). The lysate was cleared by centrifugation, then loaded onto a HiTrap Heparin HP column (GE Healthcare Life Sciences), and eluted using a gradient from 0.1 M to 1 M NaCl in TGED buffer [20 mM Tris-HCl, pH 8.0, 5% (v/v) glycerol, 0.1 mM EDTA-NaOH, pH 8.0, 1 mM DTT]. The fractions containing nsp12 were pooled and loaded onto a HisTrap HP column (GE Healthcare Life Sciences), washed, and eluted with Nickel elution buffer [20 mM Tris-HCl pH 8.0, 300 mM NaCl, 5% (v/v) glycerol, 250 mM imidazole, 1 mM 2-mercaptoethanol (BME)]. Eluted nsp12 was dialyzed overnight into dialysis buffer [20 mM Tris-HCl pH 8.0, 300 mM NaCl, 5% (v/v) glycerol, 20 mM imidazole, 1 mM BME] in the presence of His<sub>6</sub>-Ulp1 SUMO protease to cleave the His<sub>6</sub>-SUMO tag. Cleaved nsp12 was again passed through the HisTrap HP column and the flow-through was collected, concentrated by centrifugal filtration (Amicon), and loaded onto a Superdex 200 HiLoad 16/600 (GE Healthcare Life Sciences) that was equilibrated with gel filtration buffer [20 mM Tris-HCl, pH 8.0, 300 mM NaCl, 5 mM MgCl<sub>2</sub>, 5% (v/v) glycerol, 2 mM DTT]. Purified nsp12 was put into storage buffer [20 mM Tris-HCl, pH 8.0, 300 mM NaCl, 5 mM MgCl<sub>2</sub>, 20% (v/v) glycerol, 2 mM DTT], aliquoted, flash frozen with liquid N<sub>2</sub>, and stored at -80°C.

### Nsp7/8

The pCDFduet plasmid expressing His<sub>6</sub>-nsp7/8 was transformed into *Eco* BL21 (DE3) and grown overnight on LB-agar plates containing 50 µg/mL Strep. Single colonies were used to inoculate LB/Strep media and grown overnight at 37°C. Two-liter flasks of LB/Strep were inoculated with 25 mL of overnight culture and ZnCl<sub>2</sub> (10 µM final). Cells were grown at 30°C, induced at 0.6 OD<sub>600</sub> by the addition of IPTG (0.1 mM final), then incubated for 14 hr at 16°C. Cells were collected by centrifugation, resuspended in 20 mM Tris-HCl pH 8.0, 0.1 mM EDTA-NaOH, pH 8.0, 300 mM NaCl, 5% (v/v) glycerol, 5 mM imidazole, 1 mM BME, 10 µM ZnCl<sub>2</sub>, 1x PIC (Roche), 1 mM PMSF, and lysed in a continuous-flow French press (Avestin). The lysate was cleared by centrifugation, then loaded onto a HisTrap HP column (GE Healthcare Life Sciences), washed, and eluted with Nickel elution buffer. Eluted nsp7/8 was dialyzed overnight into dialysis buffer in the presence of His<sub>6</sub>-Prescission Protease to cleave His<sub>6</sub>-tag. Cleaved nsp7/8 was passed through the HisTrap HP column and the flow-through was collected, concentrated by centrifugal filtration (Amicon), and loaded onto a Superdex 75 Hiloal 16/600 (GE Healthcare Life Sciences) that was equilibrated with gel filtration buffer. Purified nsp7/8 was put into storage buffer, aliquoted, flash frozen with liquid N<sub>2</sub>, and stored at -80°C.

### Nsp13

The pet28 plasmid expressing His<sub>6</sub>-nsp13 was transformed into *Eco* Rosetta (DE3) (Novagen) and grown overnight on LB-agar plates containing 50 µg/mL KAN and 25 µg/mL CAM. Single colonies were used to inoculate LB/KAN/CAM media and grown overnight at 37°C. Two-liter flasks of LB/KAN/CAM were inoculated with 25 mL of overnight culture. Cells were grown at 37°C, induced at 0.7 OD<sub>600</sub> by the addition of IPTG (0.2 mM final), then incubated for 17 hr at 16°C. Cells were collected by centrifugation, resuspended in 50 mM HEPES-NaOH, pH 7.5, 500 mM NaCl, 4 mM MgCl<sub>2</sub>, 5% (v/v) glycerol, 20 mM imidazole, 5 mM BME, 1 mM ATP, 1 mM PMSF and lysed in a continuous-flow French press (Avestin). The lysate was cleared by centrifugation, then loaded onto a HisTrap HP column, washed, and eluted with Nickel elution buffer + 1 mM ATP. Eluted nsp13 was dialyzed overnight into 50 mM HEPES-NaOH pH 7.5, 500 mM NaCl, 4 mM MgCl<sub>2</sub>, 5% (v/v) glycerol, 20 mM imidazole, 5 mM BME in the presence of His<sub>6</sub>-Prescission Protease to cleave the His<sub>6</sub>-tag. Cleaved nsp13 was passed through a HisTrap HP column and the flow-through was collected, concentrated by centrifugal filtration (Amicon), and loaded onto a Superdex 200 Hiloal 16/600 (GE Healthcare) that equilibrated with 25 mM HEPES-NaOH pH 7.0, 250 mM KCl, 1 mM MgCl<sub>2</sub>, 1 mM TCEP. Purified nsp13 was put into 25 mM HEPES-NaOH pH 7.5, 250 mM KCl, 1 mM MgCl<sub>2</sub>, 20% (v/v) glycerol, 1 mM TCEP, aliquoted, flash frozen with liquid N<sub>2</sub>, and stored at -80°C.

### Native electrophoretic mobility shift assays

Nsp12 (2 µM) or holo-RdRp (nsp12 incubated with three-fold molar excess nsp7/8 and additional three-fold molar excess nsp8) in transcription buffer (120 mM K-acetate, 20 mM HEPES, 10 mM MgCl<sub>2</sub>, 2 mM DTT) was incubated with 1 µM annealed RNA scaffold (Figure 1A) for 5 minutes at 30°C. Nsp13 (2 µM) was added where indicated. ADP and AlF<sub>3</sub> (Sigma-Aldrich) was pre-mixed and added to a final concentration of 2 mM. Reaction mixtures containing nsp13 were incubated an additional 5 minutes at 30°C. Reactions were run on a 4.5% polyacrylamide native gel (37.5:1 acrylamide:bis-acrylamide) in 1x TBE (89 mM Tris, 89 mM boric acid, 1 mM EDTA) at 4°C. The gel was stained with Gel-Red (Biotium).

### Native mass spectrometry (nMS) analysis

The reconstituted RNA-bound holo-RdRp (RTC) and the purified nsp13 were buffer exchanged separately into nMS solution (150 mM ammonium acetate, pH 7.5, 0.01% Tween-20) using Zeba microspin desalting columns with a 40-kDa MWCO (Thermo Scientific). The buffer-exchanged samples were mixed yielding a final concentration of 4 µM RTC and 5 µM nsp13, and then incubated for 5 min at RT prior to nMS characterization.

For nMS analysis, 2–3 µL of each sample was loaded into a gold-coated quartz capillary tip that was prepared in-house and then electrosprayed into an Exactive Plus with extended mass range (EMR) instrument (Thermo Fisher Scientific) with a static direct infusion nanospray source (Olinares and Chait, 2019). The MS parameters used include: spray voltage, 1.2 kV; capillary temperature, 125°C; in-source dissociation, 10 V; S-lens RF level, 200; resolving power, 17,500 at *m/z* of 200; AGC target, 1 × 10<sup>6</sup>; maximum injection time, 200 ms; number of microscans, 5; injection flatapole, 8 V; interflatapole, 4 V; bent flatapole, 4 V; high energy collision dissociation (HCD), 200 V; ultrahigh vacuum pressure, 6–7 × 10<sup>-10</sup> mbar; total number of scans, at least 100. Mass calibration in positive EMR mode was performed using cesium iodide. For data processing, the acquired MS spectra were visualized using Thermo Xcalibur Qual Browser (v. 4.2.47). MS spectra deconvolution was performed either manually or using the software UniDec v. 4.2.0 (Marty et al., 2015; Reid et al., 2019). The deconvolved spectra were replotted using the *m/z* software (Proteometrics LLC). Experimental masses were reported as the average mass ± standard deviation (SD) across all the calculated mass values within the observed charge state series. Mass accuracies (indicated in this section in parenthesis after each measured mass) were calculated as the % difference between the measured and expected masses relative to the expected mass. For the reconstituted RTC, we obtained one predominant peak series corresponding to the fully assembled RTC with a mass of 188,984 ± 2 Da (0.008%). When nsp13 was mixed with the RTC, the resulting nMS spectrum showed a predominant peak series corresponding to the supercomplex of nsp13-RTC at 1:1 stoichiometry with a mass of 256,470 ± 10 Da (0.016%). Additional peak series were observed and were assigned to the nsp13-RTC + 490 Da (most likely from one bound Mg-ADP: 454 Da, which was also observed in the nsp13 only sample) with mass of 256,960 ± 10 Da (0.03%), and nsp12 with experimental mass of 106,787 ± 2 Da (0.0017%). The experimental masses of the individual proteins and the RNA scaffold were also determined by native MS and compared to expected masses based on their sequence and known number of zinc ions bound. The following expected masses were used for the component proteins and nucleic

acid scaffold—nsp7: 9,739 Da; nsp8 (N-terminal Met lost): 21,881 Da; RNA duplex: 28,681 Da; nsp13 (post-protease cleavage, has three Zn<sup>2+</sup> ions coordinated with 3 His and 9 deprotonated Cys residues): 67,463 Da, and nsp12 (has two Zn<sup>2+</sup> ions coordinated with 2 His and 6 deprotonated Cys residues): 106,785 Da.

### **In vitro Transcription Assays**

*In vitro* primer elongation assays were performed using a template-primer RNA scaffold of the following sequence: template (5'-CUAUCCCCAUGUGAUUUUAAUAGCUUCUAGGAGAAUGAC-3') and primer (5'-GUCAUUCUCCUAAGAAGCUA-3') (Figure S1C) (Horizon Discovery Ltd./Dharmacon) annealed in 10 mM Tris-HCl, pH 8.0, 50 mM KCl, 1 mM EDTA. Primer elongation reactions (20  $\mu$ L) containing 500 nM RNA scaffold, nsp12 (1  $\mu$ M), nsp7/8 (3  $\mu$ M) and NTPS (500  $\mu$ M of UTP, CTP, GTP, 50  $\mu$ M ATP and 1  $\mu$ Ci  $\alpha$ -<sup>32</sup>P-ATP (Perkin-Elmer) were incubated at 30°C for 30 min prior to quenching with an equal volume of 2x stop solution (Invitrogen-Gel Loading buffer II). Primer elongation products were separated on 15% acrylamide-6M urea denaturing gels and analyzed by phosphorimaging.

### **Nsp13 Steady-state ATPase Activity Assays**

Steady-state ATPase activity of nsp13 was determined using an NADH-coupled assay as described previously (Cupido, et al. 2019; Pisa, et al., 2019). Briefly, nsp13 (4.4 nM final) was added in the absence or presence of holo-RdRp (4 nM final), RNA (4.8 nM final), or CHAPSO (8 mM) to wells in a black, clear bottom 384-well microplate (Greiner, 781092), along with NADH (175  $\mu$ M, Sigma Aldrich), phospho(enol)pyruvic acid monopotassium salt (PEP) (1 mM, Sigma Aldrich) and pyruvate kinase/lactic acid dehydrogenase (PK/LDH) enzymes from rabbit muscle (30 units/ml, Sigma Aldrich) in assay buffer (25 mM HEPES pH 8.0, 150 mM K-acetate, 10 mM MgCl<sub>2</sub>, 1 mM TCEP, 0.005% Triton X-100, and 0.1 mg/mL BSA). The reaction was initiated by the addition of 6  $\mu$ L ATP (concentrations of 3 mM to 3  $\mu$ M, 4-fold serial dilutions), bringing the total reaction volume to 24  $\mu$ L. The time course of fluorescence decrease, corresponding to the consumption of NADH, was measured using a Synergy NEO Microplate Reader  $\lambda_{ex}$  = 340 nm, 440 nm emission filter). The rate of fluorescence decrease was calculated after subtraction of background fluorescence from a control reaction containing no ATP and converted to ATPase rate per second per monomer using an ADP calibration curve. These assays were completed with an n = 2 and two biological replicates of nsp13.

To measure inhibition of nsp13 ATPase activity by AlF<sub>3</sub>, nsp13 ATPase activity was measured using an ATP detection method (Promega Kinase-Glo Plus® kit). The assay was performed in 384-well low-volume white NBS microplates, in 20  $\mu$ L volumes. Recombinant nsp13 (5 nM) and ATP (50  $\mu$ M) were added to the assay buffer (20 mM HEPES, pH 7.5, 150 mM KCl, 5 mM MgCl<sub>2</sub>, 1 mM TCEP, 0.005% Triton X-100, 0.1% BSA and 2% DMSO) and incubated with gentle shaking for 10 min. Following incubation, 10  $\mu$ L Kinase-Glo Plus® reagent was added to the assay plate and incubated in the dark for 10 min. Relative light unit (RLU) signal was measured on a Synergy Neo2 plate reader (Biotek) in luminescent mode. For inhibition studies, nsp13 was incubated with 0–500  $\mu$ M ADP:AlF<sub>3</sub> (pre-mixed in a 1:2 molar ratio) for 10 min prior to addition of ATP.

### **Preparation of SARS-CoV-2 nsp13-RTC for Cryo-EM**

Purified nsp12 and nsp7/8 were concentrated by centrifugal filtration (Amicon), mixed in a 1:3 molar ratio and dialyzed into 20 mM HEPES-NaOH pH 8.0, 300 mM NaCl, 10 mM MgCl<sub>2</sub>, 2 mM DTT, for 20 min at 22°C to remove glycerol and to allow for association. Annealed RNA scaffold (Figure 1A) was added to dialyzed nsp7/8/12 mixture and incubated for 15 min at 22°C. Sample was buffer exchanged into S6 buffer [20 mM HEPES-NaOH, pH 8.0, 150 mM K-acetate, 10 mM MgCl<sub>2</sub>, 2 mM DTT] using Zeba spin desalting columns. After buffer exchange, the sample was further incubated for 20 min at 30°C and then purified over a Superose 6 Increase 10/300 GL column (GE Healthcare Life Sciences) in S6 buffer. The peak corresponding to the RTC was pooled and concentrated by centrifugal filtration (Amicon). Purified nsp13 was concentrated by centrifugal filtration (Amicon) and buffer exchanged into S6 buffer using Zeba spin desalting columns, mixed with ADP and AlF<sub>3</sub> (1 mM final), then added to the RTC at a molar ratio of 1:1. Complex was incubated for 5 min at 30°C.

### **Cryo-EM grid preparation**

Prior to grid freezing, 3-([3-cholamidopropyl]dimethylammonio)-2-hydroxy-1-propanesulfonate (CHAPSO, Anatrace) was added to the sample (8 mM final), resulting in a final complex concentration of 8  $\mu$ M (Chen et al., 2019). The final buffer condition for the cryo-EM sample was 20 mM HEPES-NaOH, pH 8.0, 150 mM K-acetate, 10 mM MgCl<sub>2</sub>, 2 mM DTT, 1 mM ADP, 1 mM AlF<sub>3</sub>, 8 mM CHAPSO. C-flat holey carbon grids (CF-1.2/1.3-4Au, Protochips) were glow-discharged for 20 s prior to the application of 3.5  $\mu$ L of sample. Using a Vitrobot Mark IV (Thermo Fisher Scientific), grids were blotted and plunge-froze into liquid ethane at 90% chamber humidity at 4°C.

### **Cryo-EM data acquisition and processing**

Structural biology software was accessed through the SBGrid consortium (Morin et al., 2013).

Grids were imaged using a 300 kV Titan Krios (Thermo Fisher Scientific) equipped with a GIF BioQuantum and K3 camera (Gatan). Images were recorded with Legikon (Suloway et al., 2005) with a pixel size of 1.1  $\text{\AA}/\text{px}$  (micrograph dimension of 5760  $\times$  4092 px) over a defocus range of  $-0.8 \mu\text{m}$  to  $-2.5 \mu\text{m}$  and 20 eV slit. Movies were recorded in “counting mode” (native K3 camera binning 2) with  $\sim 30 \text{ e}^-/\text{px}/\text{s}$  in dose-fractionation mode with subframes of 50 ms over a 2.5 s exposure (50 frames) to give a total dose of  $\sim 64 \text{ e}^-/\text{\AA}^2$ .

Dose-fractionated movies were gain-normalized, drift-corrected, summed, and dose-weighted using MotionCor2 (Zheng et al., 2017). The contrast transfer function (CTF) was estimated for each summed image using the Patch CTF module in cryoSPARC v2.15.0 (Punjani et al., 2017). Particles were picked and extracted from the dose-weighted images with box size of 256 px using cryoSPARC Blob Picker and Particle Extraction.

#### **Nsp13-RTC (no detergent)**

The entire dataset consisted of 10,423 motion-corrected images with 3,691,022 particles (Figure S3). Particles were sorted using three rounds of cryoSPARC 2D classification ( $N = 100$ ), resulting in 641,026 curated particles. An initial 3D map was generated using cryoSPARC *Ab initio* Reconstruction on a subset of the particles (128,437 particles from first 3,501 images). Particles were further curated using the map derived from cryoSPARC *Ab initio* Reconstruction as a template for cryoSPARC Heterogeneous Refinement ( $N = 6$ ). Class 1 consisted of 88,918 nsp8/12 particles that were further curated using cryoSPARC *Ab initio* Reconstruction ( $N = 2$ ) and refined using cryoSPARC Non-uniform Refinement. The final nsp8/12 map contained 88,918 particles with nominal resolution of 3.7 Å. Class 3 and Class 6 were each classified using Heterogeneous Refinement ( $N = 3$ ) revealing distinct nsp13-RTCs. Class 3.1 consisted of 29,152 (nsp13<sub>2</sub>-RTC)<sub>2</sub> particles (re-extracted with a boxsize of 320 px) that were further curated using cryoSPARC *Ab initio* Reconstruction ( $N = 2$ ) and refined using cryoSPARC Non-uniform Refinement. The final (nsp13<sub>2</sub>-RTC)<sub>2</sub> map consisted of 17,073 particles with nominal resolution of 4.2 Å. Class 3.3, 6.1, and 6.2 were combined and further curated with two rounds of Heterogeneous Refinement ( $N = 3$ ) and sorted using cryoSPARC *Ab initio* Reconstruction ( $N = 3$ ), revealing two distinct classes: nsp13-RTC and nsp13<sub>2</sub>-RTC. These classes were further curated using cryoSPARC *Ab initio* Reconstruction ( $N = 2$ ) and refined using cryoSPARC Non-uniform Refinement. The final nsp13<sub>1</sub>-RTC map was derived from 31,783 particles with nominal resolution of 3.8 Å. The final nsp13<sub>2</sub>-RTC map was derived from 16,521 particles with nominal resolution of 4.3 Å. Local resolution calculations (Figure S3B) were generated using blocres and blocfilt from the Bsoft package (Cardone et al., 2013). The directional FSC (Figure S3C; Tan et al., 2017) and particle orientation distribution map from cryoSPARC (Figure S3D) for the nsp13<sub>2</sub>-RTC particles indicated that the map (and resolution estimations) were corrupted by severe particle orientation bias.

#### **Nsp13-RTC (CHAPSO)**

The entire dataset consisted of 4,358 motion-corrected images with 1,447,307 particles (Figure S4A). Particles were sorted using cryoSPARC 2D classification ( $N = 100$ ), resulting in 344,953 curated particles. Initial models (Seed 1: complex, Seed 2: decoy 1, Seed 3: decoy 2) were generated using cryoSPARC *Ab initio* Reconstruction on a subset of the particles (10,509 particles from first 903 images). Particles were further curated using Seeds 1-3 as 3D templates for cryoSPARC Heterogeneous Refinement ( $N = 3$ ), then re-extracted with a boxsize of 320 px, and followed by another round of Heterogeneous Refinement ( $N = 3$ ) using Seed 1 as a template. The resulting 91,058 curated particles were sorted into three classes using cryoSPARC Heterogeneous Refinement ( $N = 3$ ). Each class was further sorted using cryoSPARC *Ab initio* Reconstruction ( $N = 3$ ) to separate distinct 3D classes. Using these classes as references for Heterogeneous Refinement ( $N = 6$ ), multi-reference classification was performed on the 91,058 curated particles. Classification revealed three unique classes: (1) nsp13-RTC, (2) nsp13<sub>2</sub>-RTC, (3) (nsp13<sub>2</sub>-RTC)<sub>2</sub>. Particles within each class were further processed using RELION 3.1-beta Bayesian Polishing (Scheres, 2012; Zivanov et al., 2018). “Polished” particles were refined using cryoSPARC Non-uniform Refinement, resulting in structures with the following particle counts and nominal resolutions: nsp13-RTC (17,345; 4.0 Å), nsp13<sub>2</sub>-RTC (58,942; 3.5 Å), (nsp13<sub>2</sub>-RTC)<sub>2</sub> (11,771; 7.9 Å). Regions corresponding to nsp13.1 and nsp13.2 in the nsp13<sub>2</sub>-RTC map were further refined with cryoSPARC Local Refinement. Local resolution calculations (Figure S4B) were generated using blocres and blocfilt from the Bsoft package (Cardone et al., 2013). The directional FSC (Figure S4C; Tan et al., 2017) and particle orientation distribution map from cryoSPARC (Figure S4D) for the nsp13<sub>2</sub>-RTC indicated that the particles did not suffer orientation bias.

#### **Model building and refinement**

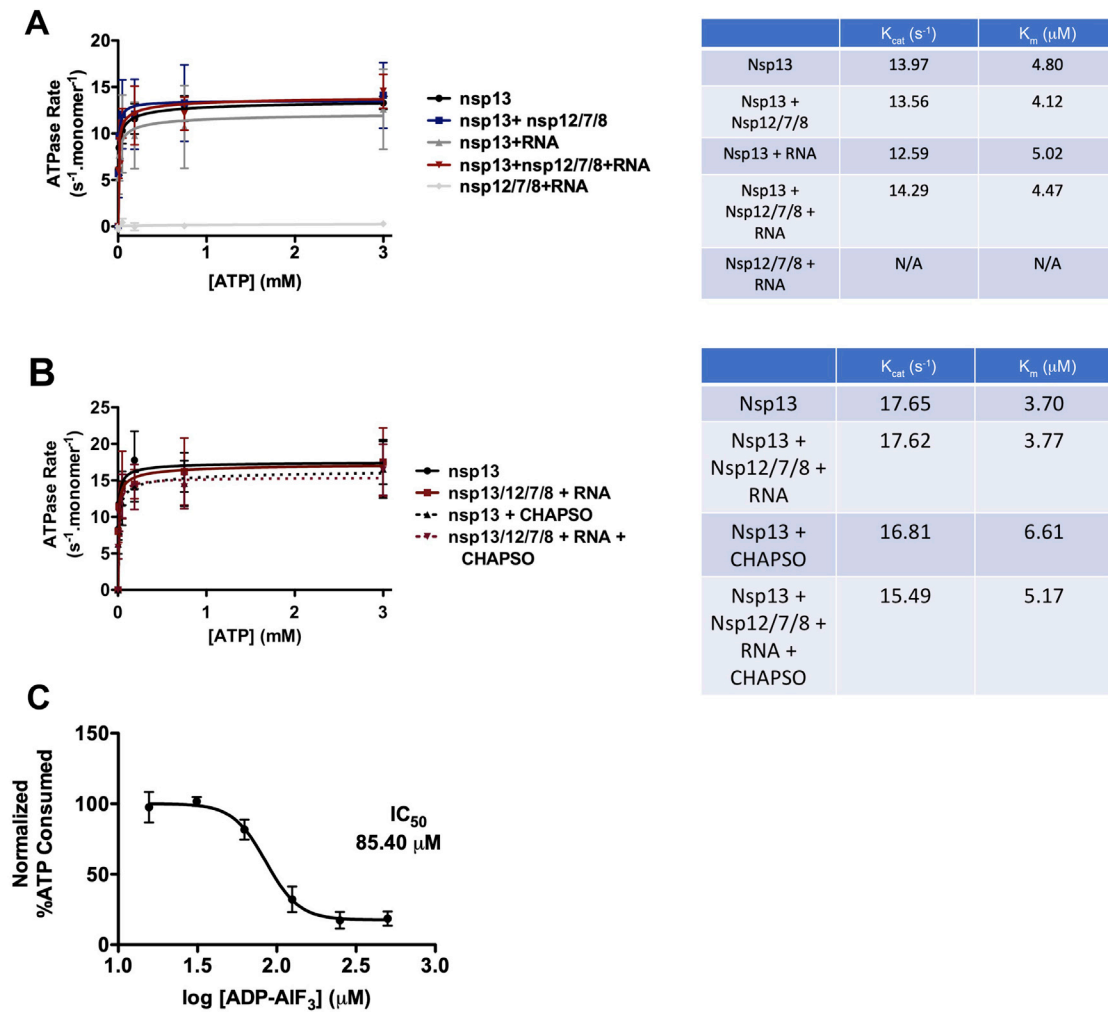
For initial model of the nsp13<sub>2</sub>-RTC, the initial RTC model was derived from PDB:6YYT (Hillen et al., 2020) and the initial nsp13 model from PDB:6JYT (Jia et al., 2019). The models were manually fit into the cryo-EM density maps using Chimera (Pettersen et al., 2004) and rigid-body and real-space refined using Phenix real-space-refine (Adams et al., 2010). For real-space refinement, rigid body refinement was followed by all-atom and B-factor refinement with Ramachandran and secondary structure restraints. Models were inspected and modified in Coot (Emsley and Cowtan, 2004).

#### **QUANTIFICATION AND STATISTICAL ANALYSIS**

The nMS spectra were visualized using Thermo Xcalibur Qual Browser (versions 3.0.63 and 4.2.27), deconvolved using UniDec versions 3.2 and 4.1 (Marty et al., 2015; Reid et al., 2019) and plotted using the m/z software (Proteomics LLC, New York, NY). Experimental masses (Figure 1C) were reported as the average mass  $\pm$  standard deviation across all the calculated mass values obtained within the observed charge state distribution.

The local resolution of the cryo-EM maps (Figure S4B) was estimated using blocres (Cardone et al., 2013) with the following parameters: box size 15, sampling 1.1, and cutoff 0.5. Directional 3D FSC (Figures S3C and S4C) were calculated by 3DFSC (Tan et al., 2017). The quantification and statistical analyses for model refinement and validation were generated using MolProbity (Chen et al., 2010) and PHENIX (Adams et al., 2010).





**Figure S2. Nsp13 Activities, Related to Figure 1**

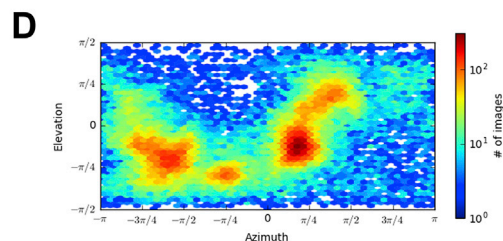
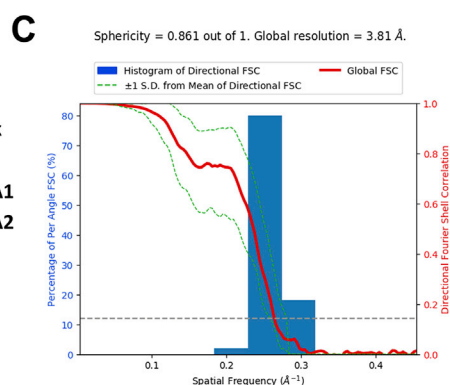
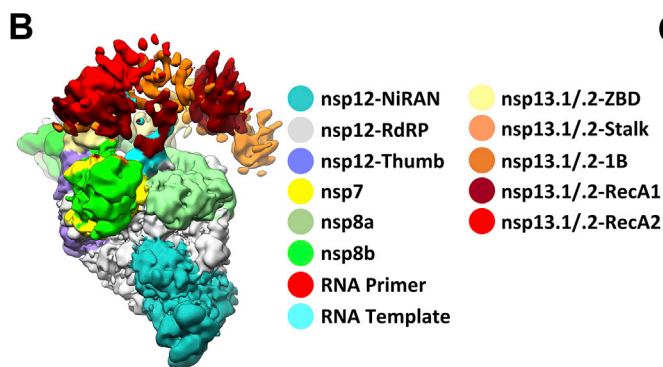
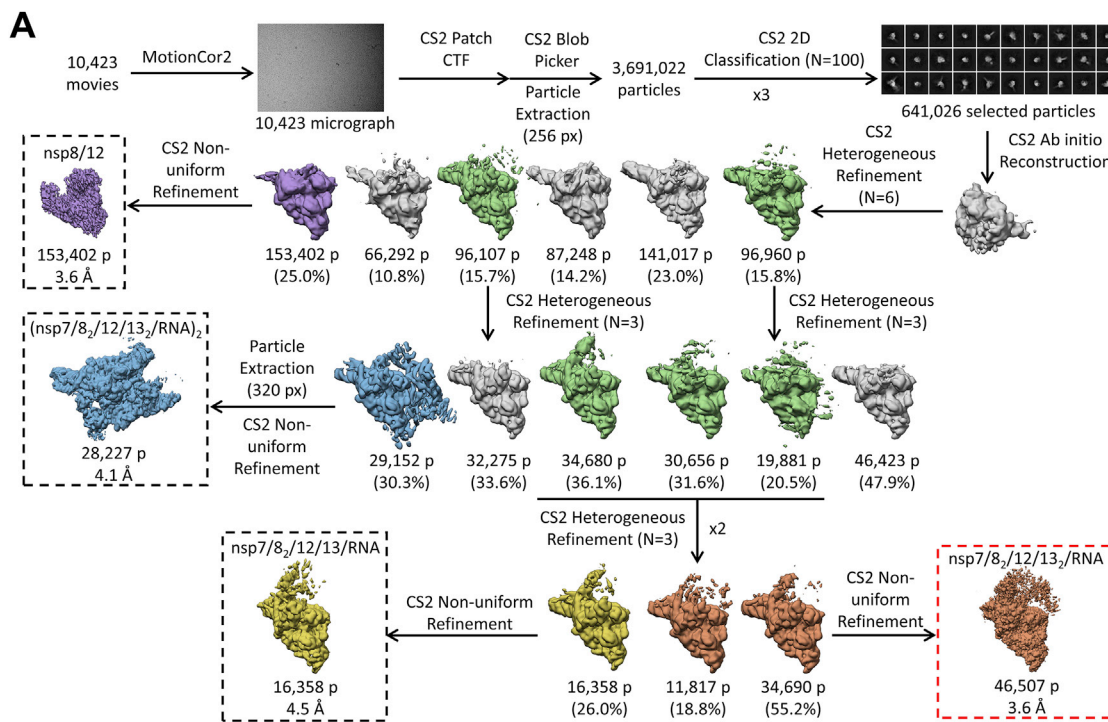
A. (left) ATPase assay comparing nsp13 alone, nsp13 + holo-RdRp (nsp12/7/8), nsp13 + RNA scaffold alone, nsp13-RTC (nsp13/12/7/8 + RNA), and the RTC alone (nsp12/7/8 + RNA). Error bars indicate the range for two independent measurements.

(right) Calculated  $K_{cat}$  and  $K_m$  values for the ATPase assay.

B. (left) ATPase assay comparing nsp13 alone and nsp13-RTC (nsp13/12/7/8 + RNA)  $\pm$  8 mM CHAPSO. Error bars indicate the range for two independent measurements.

(right) Calculated  $K_{cat}$  and  $K_m$  values for the ATPase assay.

C. Inhibitory effect of ADP-AIF<sub>3</sub> on nsp13 ATPase activity (N = 6). Error bars denote standard deviation.



**Figure S3. Cryo-EM Processing Pipeline and Analysis for the nsp13-RTC (No Detergent) Dataset, Related to Figure 2**

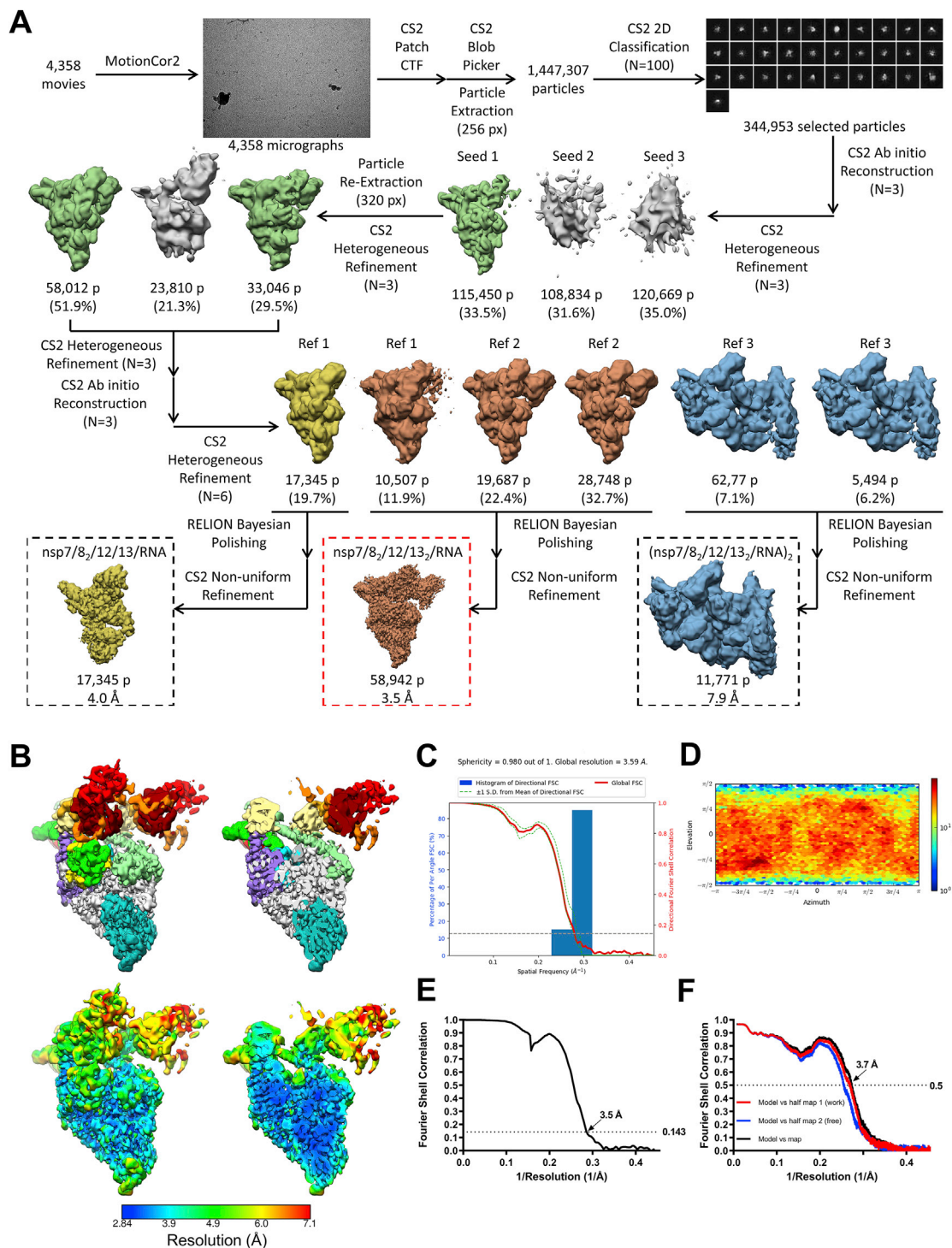
A. Cryo-EM processing pipeline.

B. Nominal 3.6 Å-resolution cryo-EM reconstruction of nsp13<sub>2</sub>-RTC (no detergent) filtered by local resolution (Cardone et al., 2013) and colored by subunit according to the key on the right.

C. Directional 3D Fourier shell correlation (FSC) for nsp13<sub>2</sub>-RTC (no detergent) calculated by 3DFSC (Tan et al., 2017).

D. Angular distribution plot for reported nsp13<sub>2</sub>-RTC (no detergent) calculated in cryoSPARC. Scale shows the number of particles assigned to a particular angular bin. Blue, a low number of particles; red, a high number of particles.





**Figure S4. Cryo-EM Processing Pipeline and Analysis for the nsp13-RTC (CHAPSO) Dataset, Related to Figure 2**

A. Cryo-EM processing pipeline.

B. Nominal 3.5 Å-resolution cryo-EM reconstruction of nsp13<sub>2</sub>-RTC (CHAPSO) filtered by local resolution (Cardone et al., 2013). The view on the right is a cross-section.

(top) Colored by subunit.

(bottom) Color by local resolution (key on the bottom).

C. Directional 3D Fourier shell correlation (FSC) for nsp13<sub>2</sub>-RTC (CHAPSO) calculated by 3DFSC (Tan et al., 2017).

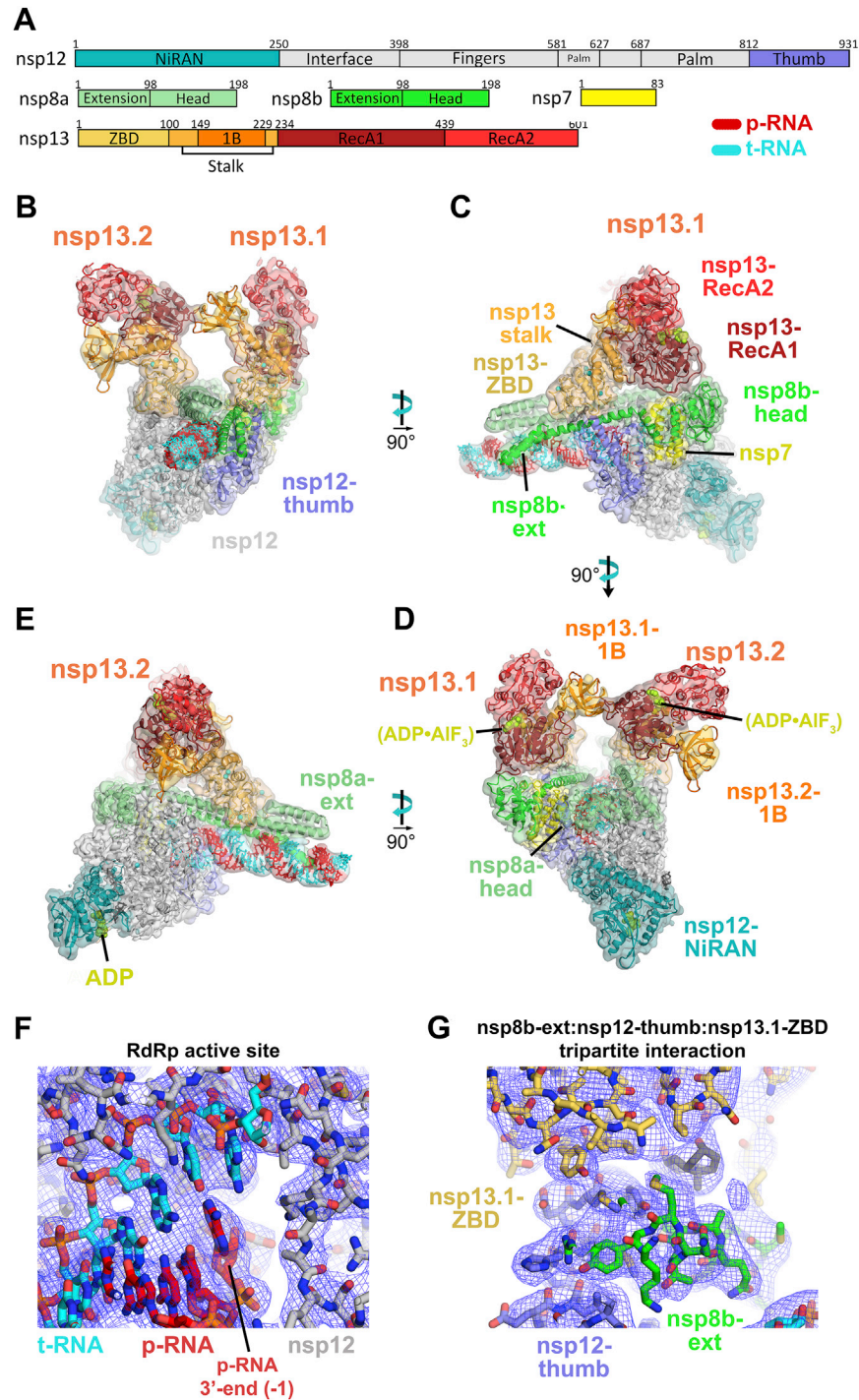
(legend continued on next page)

---

D. Angular distribution plot for reported nsp13<sub>2</sub>-RTC (CHAPSO) calculated in cryoSPARC. Scale shows the number of particles assigned to a particular angular bin. Blue, a low number of particles; red, a high number of particles.

E. Gold-standard FSC plot for nsp13<sub>2</sub>-RTC (CHAPSO), calculated by comparing two independently determined half-maps from cryoSPARC. The dotted line represents the 0.143 FSC cutoff which indicates a nominal resolution of 3.5 Å.

F. FSC calculated between the refined structure and the half map used for refinement (work, red), the other half map (free, blue), and the full map (black).



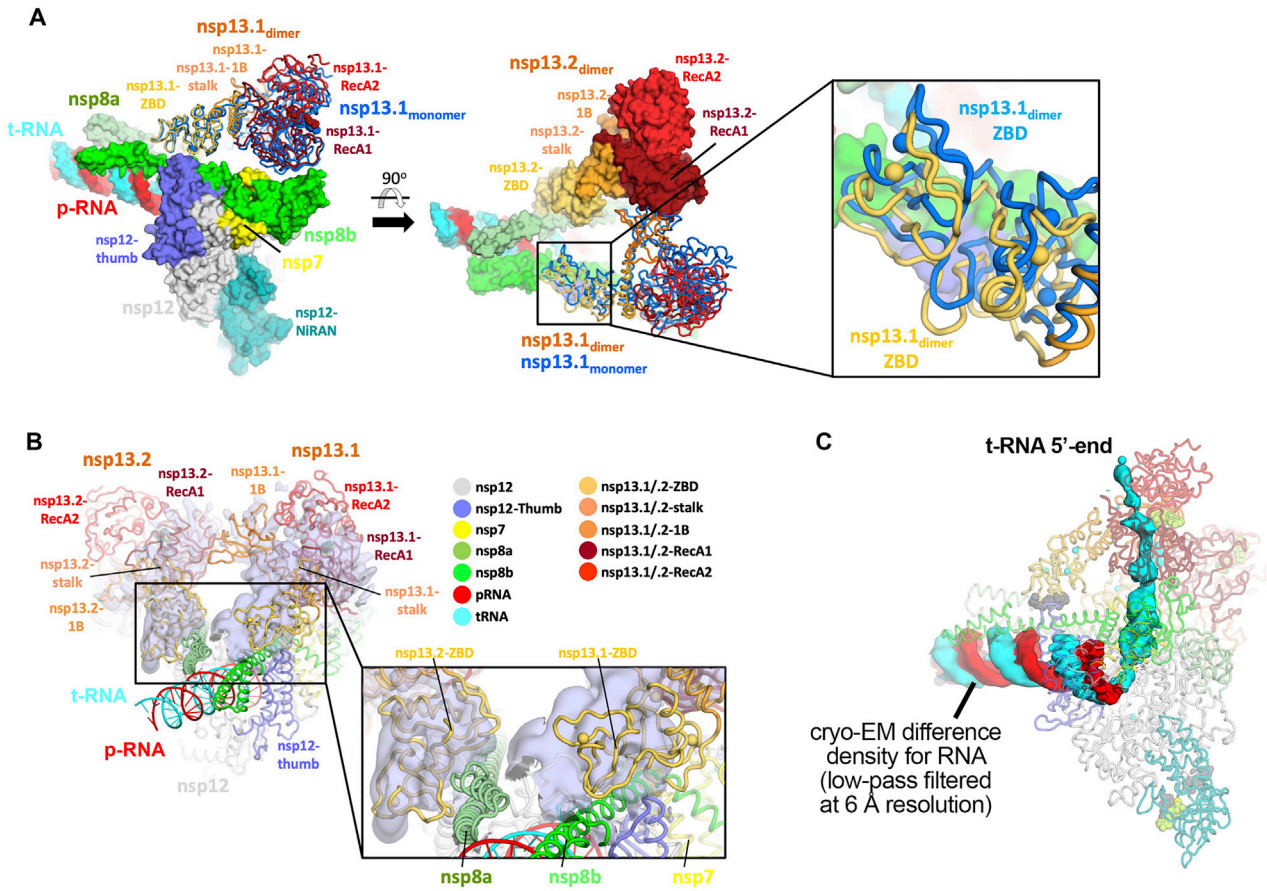
**Figure S5. Cryo-EM Density Maps, Related to Figure 2**

A. Schematic illustrating domain structure of SARS-CoV-2 holo-RdRp (nsp7, nsp8, nsp12) and nsp13. The color-coding corresponds to the figures throughout this manuscript unless otherwise specified.

B-E. Orthogonal views showing the overall architecture of the nsp13<sub>2</sub>-RTC. Shown is the transparent cryo-EM density (local-resolution filtered) with the nsp13<sub>2</sub>-RTC model superimposed. Same views as Figures 2B–2E.

F. View of the nsp12 (RdRp) active site (refined model superimposed onto the cryo-EM density, shown as blue mesh), showing the post-translocated state of the RNA.

G. View of the nsp8b-extension:nsp12-thumb:nsp13-ZBD tripartite interaction (refined model superimposed onto the cryo-EM density, shown as blue mesh). Similar view as Figure 3A.



**Figure S6. Comparison of the nsp13<sub>2</sub>-RTC (CHAPSO) Structure with nsp13<sub>1</sub>-RTC (CHAPSO) and nsp13<sub>2</sub>-RTC (No Detergent), Related to Figures 2 and 3**

A. Structure of nsp13<sub>2</sub>-RTC (CHAPSO) colored according to key in b and shown as a molecular surface except nsp13.1, which is shown as cartoon tubes. Superimposed on the overall structure is nsp13 (marine) modeled from the nsp13<sub>1</sub>-RTC (CHAPSO). Overall RMSD (calculated using 'rms\_cur' in PyMOL) between the two nsp13.1 structures is 8.1 Å over 596 C $\alpha$  atoms. (left) overall structure. (middle) overall structure rotated 90°. (right) zoom-in of boxed region in middle panel, showing region around nsp13.1-ZBD.s RMSD (calculated using 'rms\_cur' in PyMOL) between the two nsp13.1 ZBDs is 3.6 Å over 100 C $\alpha$  atoms.

B. Structure of nsp13<sub>2</sub>-RTC (CHAPSO) is shown in cartoon tubes, colored based on key, and superimposed onto the cryo-EM map from the nsp13<sub>2</sub>-RTC (no detergent) dataset (shown as light blue transparent surface). Density map is locally filtered by resolution and difference density for nsp13 is highlighted using 'isosurf' command in PyMOL with 10 Å carve buffer. (left) overall structure. (right) zoom-in of boxed region in left panel, showing region around nsp13-ZBDs.

C. Structure of nsp13<sub>2</sub>-RTC (CHAPSO) colored according to key in (b), the view is similar to the view of Figure S6A(left). Protein is shown as pale, transparent backbone worms. The surface shows a cryo-EM different density for the RNA (t-RNA, cyan; p-RNA, red) low-pass filtered to 6 Å resolution. The difference map was generated by calculating a map from the nsp13<sub>2</sub>-RTC coordinates with the RNA removed using the molmap command in Chimera (Pettersen et al., 2004), subtracting this map from the experimental map (Chimera vop command), then low-pass filtering this difference map at 6 Å resolution).